



# MASTER OF ARCHITECTURE (Interior Design)

PLACEMENT BROCHURE  
2023-25

# About FOAP

The Institute "Faculty of Architecture and Planning-AKTU", Primarily a faculty of Dr. A. P. J. Abdul Kalam Technical University Lucknow, is set on a 6-acre site and is a short walk from Hazratganj's city centre. It was founded in 1911 as a branch of the Government College of Arts and Crafts and is one of the country's oldest.

**- 1911 -**

Started as a part of "Government College of Arts and Crafts" at Lucknow

**- 1976 -**

Separated as individual institute by name of Government College of Architecture

**- 1980 -**

Became a constituent college of Lucknow University and renamed as "GCA"

**- 2006 -**

Gained autonomous status and functioned as Lucknow College of Architecture

**- 2009 -**

Became part of AKTU known as "Faculty of Architecture and Planning"



# FOAP

## Principal's Message



**"Architecture is a usual art and is experienced through all our senses.**

**According to Corbusier, we feel it through "eyes that see, head that turns and the legs that walk."**

*The buildings are the reflection of man's aspirations. These designs are brought to life by architects. These architects are created from young creative minds through rigorous training and technical knowledge imparted by experienced faculty and a conducive environment. At the faculty of architecture, AKTU, we aspire for out of the box solutions and yet be grounded in reality.*

**PROF. (DR.) VANDANA SEHGAL**  
Dean and Principal (FOAP, AKTU)



## Coordinator's Message

*Faculty of Architecture and Planning, AKTU aims to play a key role in preparing future Interior designers to meet the industry challenges by offering this specialized program.*

*The Masters of Architecture program in Interior Design is designed to establish a cohesive relationship among architecture, interiors, and technology, equipping our graduates with the skills and knowledge needed to respond effectively to the evolving challenges within the interior design industry. Through a rigorous curriculum grounded in scientific research and analysis, as well as a multidisciplinary approach to understanding various interior design trends and traditional wisdom, our students are well-prepared to tackle real-world design problems with creativity and innovation. One of the key strengths of our program lies in its focus on developing solutions for the interior designs of various typologies of built environments. Whether it's residential, commercial, hospitality, or institutional spaces, our graduates have the expertise to create thoughtful and impactful designs that meet the needs of diverse clients and users.*

*Additionally, our curriculum delves into essential subjects such as design theories, advanced materials, techniques, and processes, ensuring that our graduates are well-versed in the latest advancements in the field.*

*We invite you to connect with us and explore the opportunity to collaborate with our talented graduates to bring their unique perspectives and skills to your organization.*

**DR. MEETA TANDON**  
Associate Professor  
M.ARCH (ID) Coordinator  
In-Charge Training and Placement (FOAP-AKTU)

# Our Mentors



**PROF. (DR.) VANDANA SEHGAL**  
(Dean & Principal)



**PROF. (DR.) RITU GULATI**  
(Head of Department)



**PROF. (DR.) SUBHRAJIT BANERJEE**  
Professor



**DR. MEETA TANDON**  
Associate Professor



**Ar. ALOK OMAR**  
Assistant Professor



**AR. KUSHAGRA**  
Assistant Professor



**Ar. JUWAIRIA QAMRUDDIN**  
Assistant Professor



**Ar. SHRIYAK SINGH**  
Assistant Professor



**Ar. DIVYA PANDEY**  
Assistant Professor



**Ar. GIRISH PANDEY**  
Assistant Professor



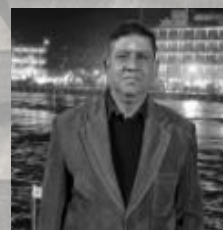
**Ar. AILA AZEEM**  
Assistant Professor



**Ar. OORVI SINGH**  
Assistant Professor



**Ar. ROLI SINGH**  
Visiting Faculty



**Ar. ARUN SRIVASTAVA**  
Visiting Faculty



**Ar. SHIKHAR SINGH**  
Visiting Faculty



**Ar. AJAY YADAV**  
Research Scholar



**Ar. ANANYA TRIPATHI**  
Research Scholar



**Ar. POORVA**  
Research Scholar

The programme is designed for architects and designers interested in developing expertise in an area of rapidly increasing importance of various aspects of interior designing (such as theories of interior design advance materials & techniques, fabrication & manufacturing processes), where skill shortages are being reported and increasing specialist knowledge is required. Thus, this programme is developed to meet the industry's specific demands.

The FOAP, AKTU aims to play a key role in preparing future Interior designers to meet the industry challenges by offering this specialized course. The aim is to develop in depth knowledge and understanding related to theories of interior design, craft & documentation, research techniques, furniture design, various building systems & services, materials estimation & specifications, working drawings, fabrication & manufacturing processes along with professional practice & management. The course offers a contextualized and deep understanding of varied interior design solutions ranging from small to large scale projects.

# M.ARCH (ID) About Course Curriculum

## **SMALL SCALE DESIGN**

TRANSITIONAL SPACE- CORRIDOR  
HOSTEL ROOM  
RESIDENCE

## **COMMERCIAL SPACES**

HERITAGE RESTAURANT  
RETAIL STORE DESIGN

## **4 Weeks Internship**

---

## **HOTEL DESIGN**

EXPERIENTIAL DESIGN FOR HERITAGE, BUSINESS AND  
LUXURY HOTEL

## **THESIS**

Thesis involves applying the knowledge gained over three semesters to a project of personal interest and significant complexity.

1st SEMESTER

2nd SEMESTER

3rd SEMESTER

4th SEMESTER

# STUDIO 1.1

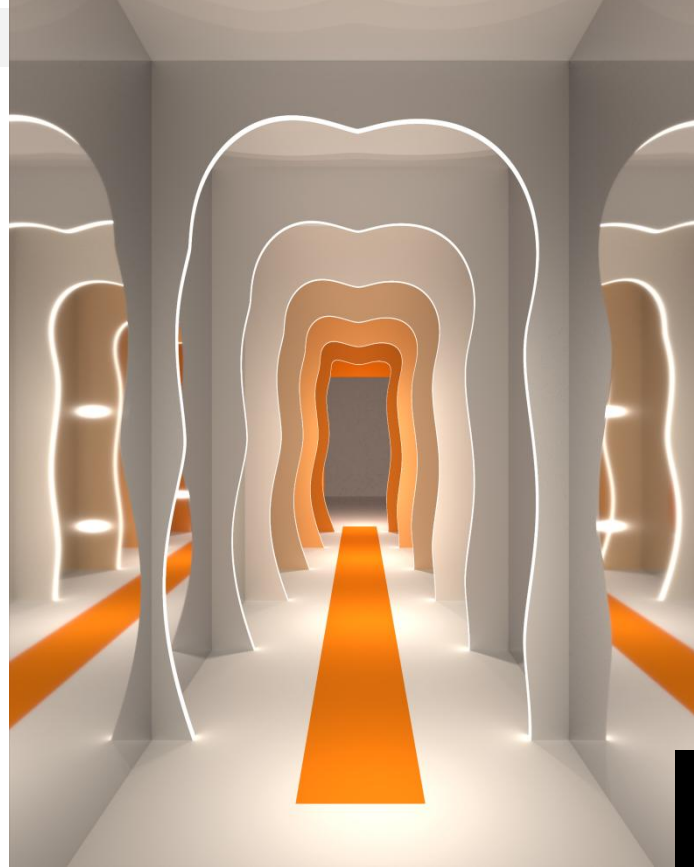
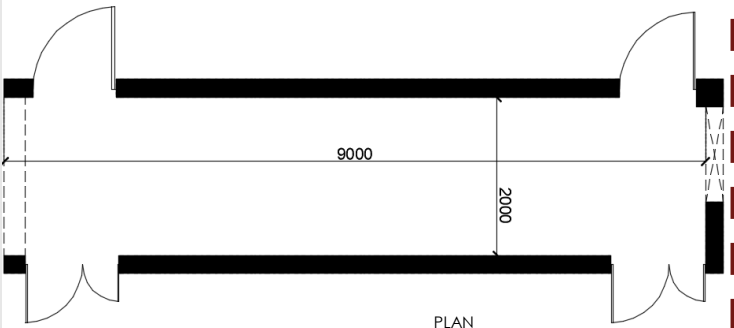
## DESIGN BRIEF

The objective of this exercise was to understand the concept of liminal spaces and understand how connecting places communicate in design

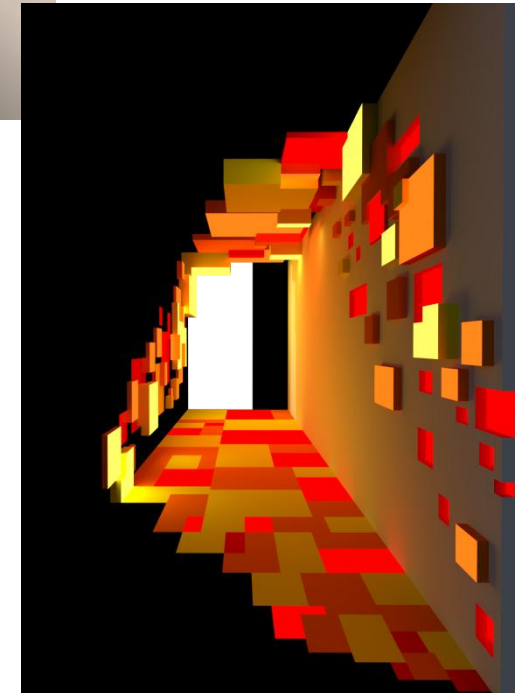
### CONCEPT

The concept of design is to capture the essence of LIMINALITY using PSYCHEDELIC ART, creating a sense of mystery, interconnectedness and contemplation. It has a certain fascination and can be a source of inspiration for creativity and introspection.

Key element of design in focus is use of FLUID LINES that convey a sense of MOVEMENT and CONTINUITY. Incorporating these lines adds a sense of FLUIDITY and DYNAMISM. An experiment with HIGH CONTRASTS, ORGANIC SHAPES, INTRICATE PATTERNS and curves create a VISUALLY ENGAGING sensory experience.



## CORRIDOR DESIGN



A liminal space refers to a transitional or in-between space, often characterized by a sense of ambiguity, transformation, and potential .

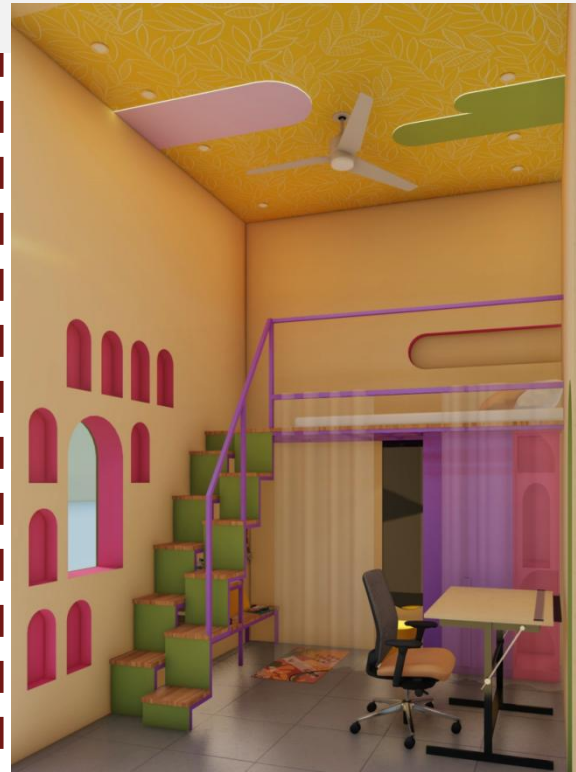
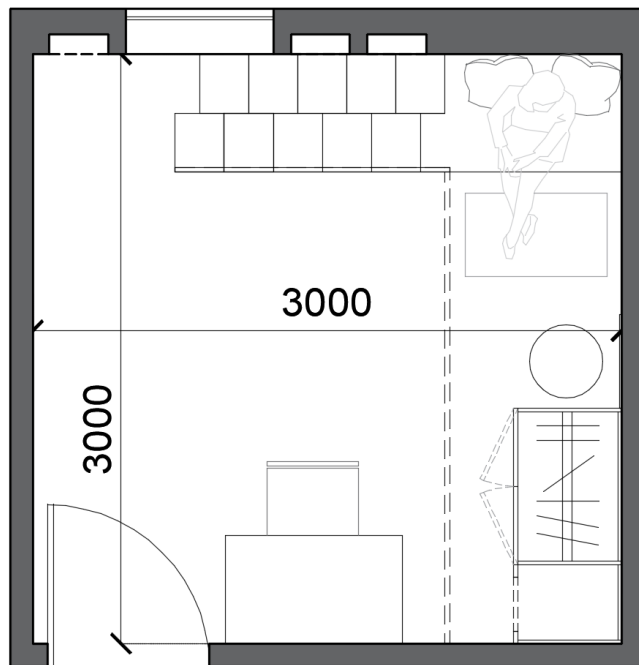
The concept is creating a space that is not only visually striking but also invites exploration and engagement. Cubes are arranged at various angles and heights, giving the illusion of movement and guiding occupants through the space in a fluid manner.

LEDs embedded within the cubes create a play of light and shadow, enhancing the sense of movement and transformation.

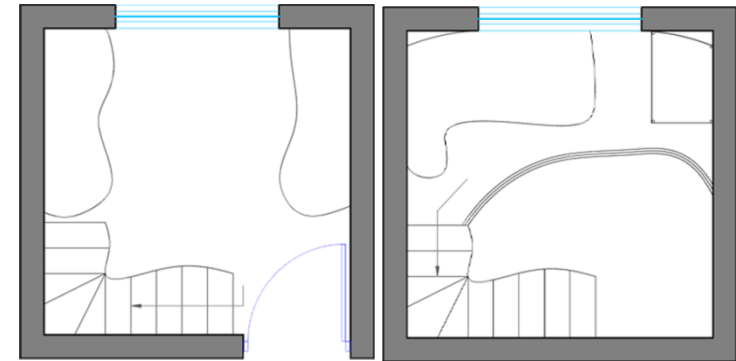
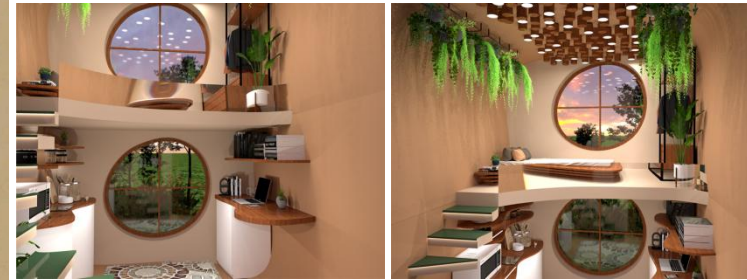
# STUDIO 1.11

## DESIGN BRIEF

The task was to create a multifunctional compact room for hostel that can accommodate daily utilities and also supports an additional space for an activity.



## HOSTEL ROOM DESIGN



Welcome to our Cosy Haven and embrace the charm of **COMPACT LIVING** with a touch of **SOPHISTICATION** in this **THOUGHTFULLY CRAFTED** retreat.

This intimate hostel room is a **MULTIFUNCTIONAL** space designed to make the most out of every square inch.

As one steps in, they can ascend to the loft bed, where niches in the wall await to showcase cherished pieces of artwork. A designated reading corner invites to unwind with your favourite book, while a dressing area tucked underneath ensures convenience and privacy.

Also we have a well equipped workstation with a drafting table providing a dedicated space for creativity and productivity.

Need a moment to rejuvenate?

The space can be transformed into a personal yoga retreat, promoting wellness and mindfulness, making it easy to incorporate relaxation into daily routine.

## | M O O D |

VIBRANT  
COSY  
MULTIFUNCTIONAL  
SERENE  
COMFORTABLE

The journey through this nature-inspired adobe is a sensory experience, capturing the essence of the outdoors and bringing it into the heart of the home; where every detail has been thoughtfully curated to create a cohesive and inviting living space.

### | M O O D |

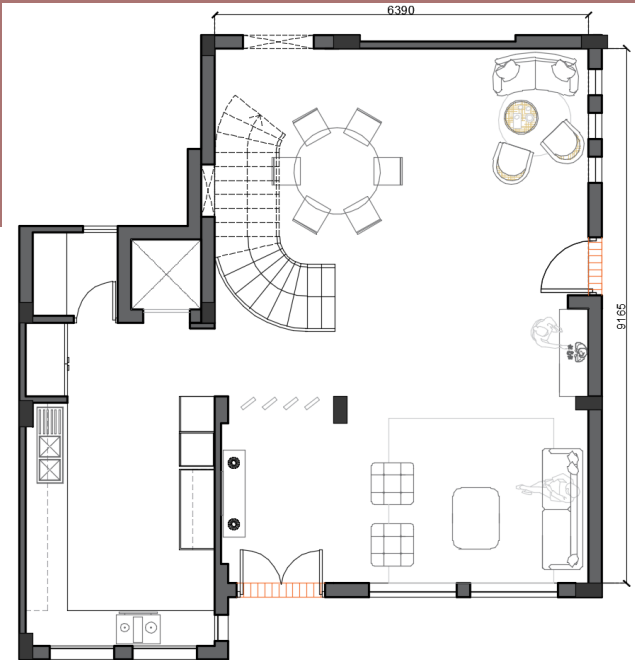
EARTHY  
ORGANIC  
RUSTIC-CHIC  
NATURE INSPIRED  
CLEAN-LINED

*A rustic charm*



## DESIGN BRIEF

The task was to create a multifunctional compact room for hostel that can accommodate daily utilities and also supports an additional space for an activity.



PLAN





ABOUT GOMTI RIVER

**Gomti River**  
Gomti River

Gomti River at Lucknow

Country India

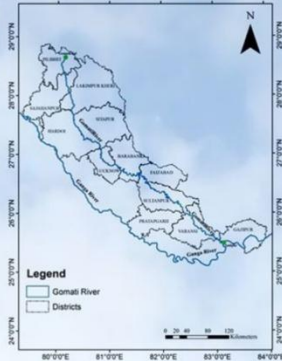
Location

Physical characteristics

- Source Gomti Talai, MadhoTanda, Prabh, Uttar Pradesh
- location Middle Ganga Plain
- coordinates 25°30'44"N 80°9'59.20"E
- elevation 200 m (660 ft)
- Length 960 km (600 mi)
- Discharge
- location Kashi, Uttar Pradesh
- average 234 m³/s (8,300 cu ft/s)

Basin features

- Tributaries
- right Gull



SITE LOCATION



DESIGN CONCEPT

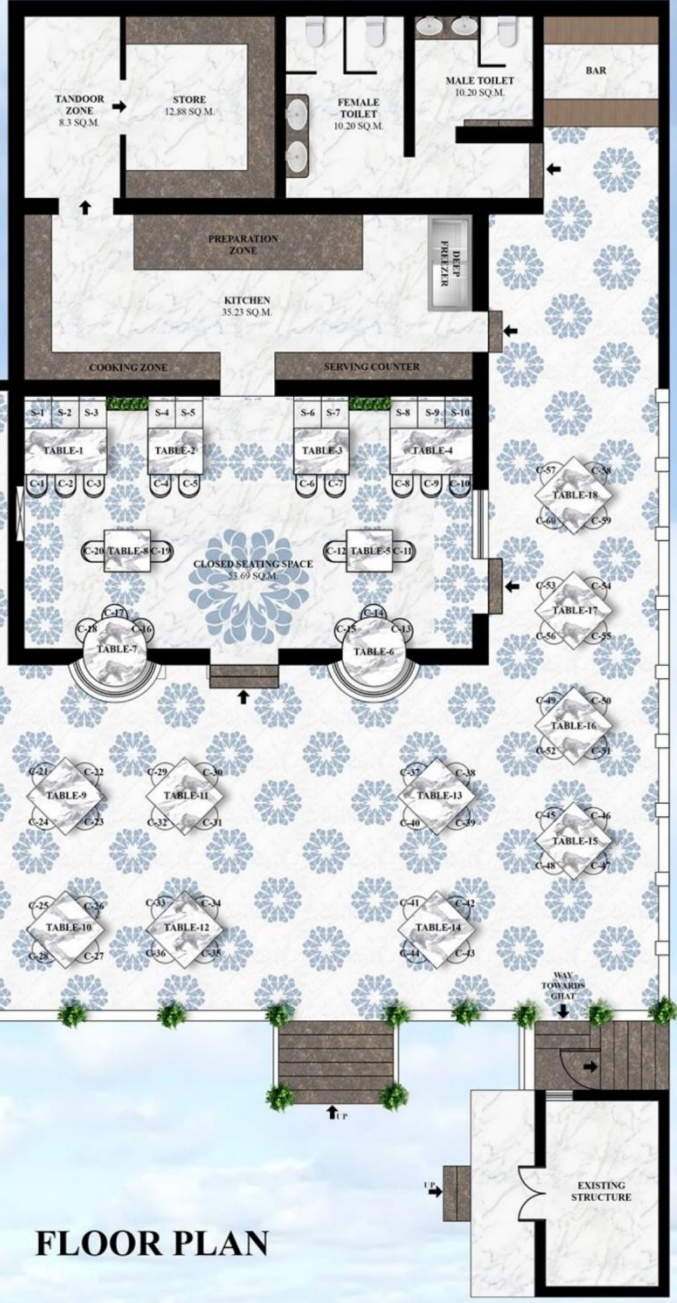
According to Hindu traditions and mythologies, Gomti is revered as a sacred river, and it is believed that offering flowers and taking a dip in the river after prayer can absolve most of your sins. The Gomti River is considered sacred in Hinduism, symbolizing purity and spiritual cleansing. It is associated with the goddess Gomti, believed to bestow blessings and prosperity. People seek its waters for purification rituals and ceremonies, emphasizing its importance in spiritual practices and cultural heritage. Among the various flowers, marigold is the most commonly offered. Offering marigolds to rivers holds deep spiritual significance in Hindu traditions. Marigolds, symbolizing purity, devotion, and auspiciousness, are believed to carry prayers and intentions to the divine. Inspired by this, I have incorporated marigold motifs in CNC designs to pay tribute to the Gomti river. These floral motifs have been utilized for both wall paneling and floor patterns. Mirrors have



MARIGOLD



SUNLIT RIPPLES



FLOOR PLAN

- TILE PATTERN USED IN INDOOR & OUTDOOR FLOORING
- TAN BROWN GRANITE USED IN STEPS AND COUNTER TOP OF KITCHEN & TOILETS
- CARRARA ITALIAN MARBLE USED IN TABLE TOP OF OUTDOOR & INDOOR TABLES
- MORNING GLORY-0765 SHADE PAINT



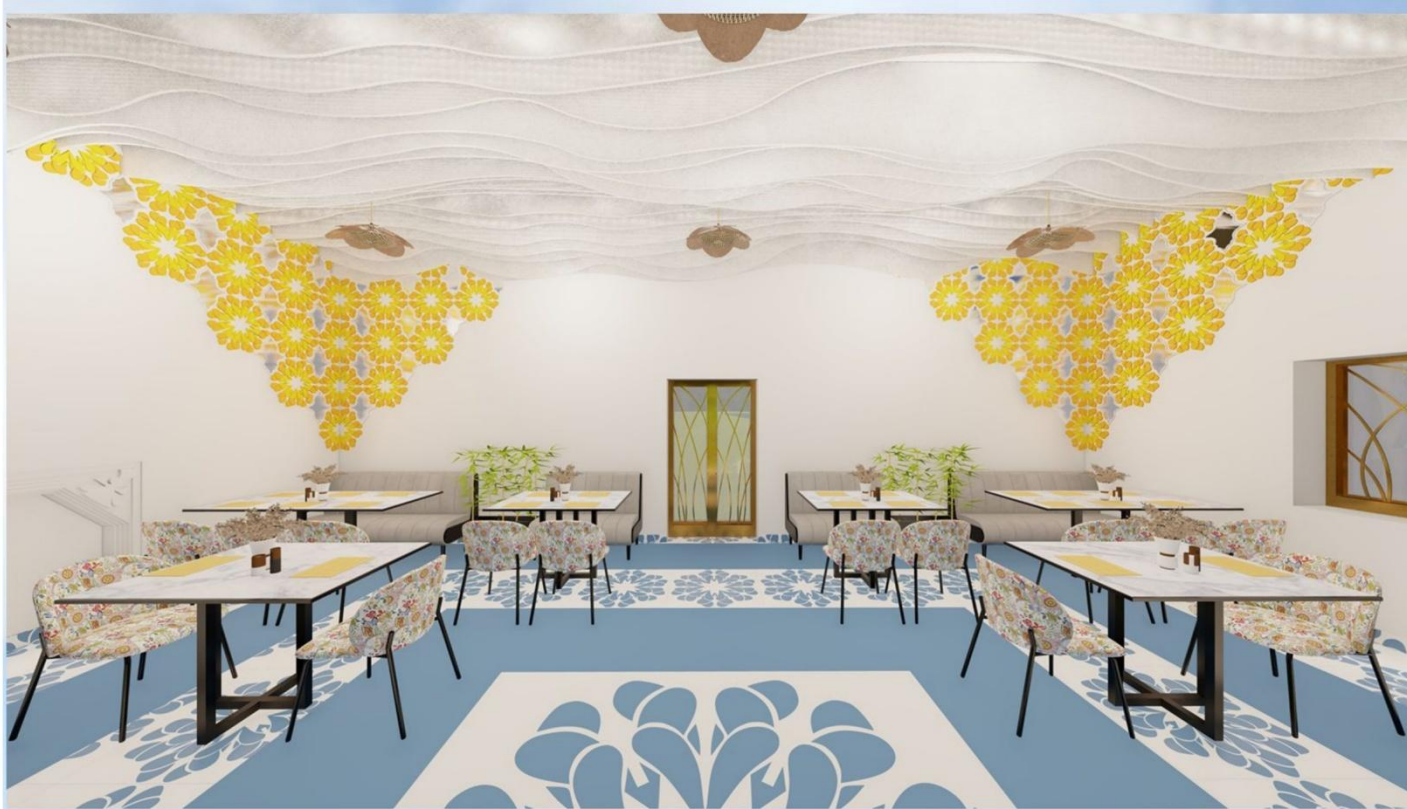
DARIYA- HOMAGE TO RIVER



OUTDOOR SEATING & BUILDING VIEWS



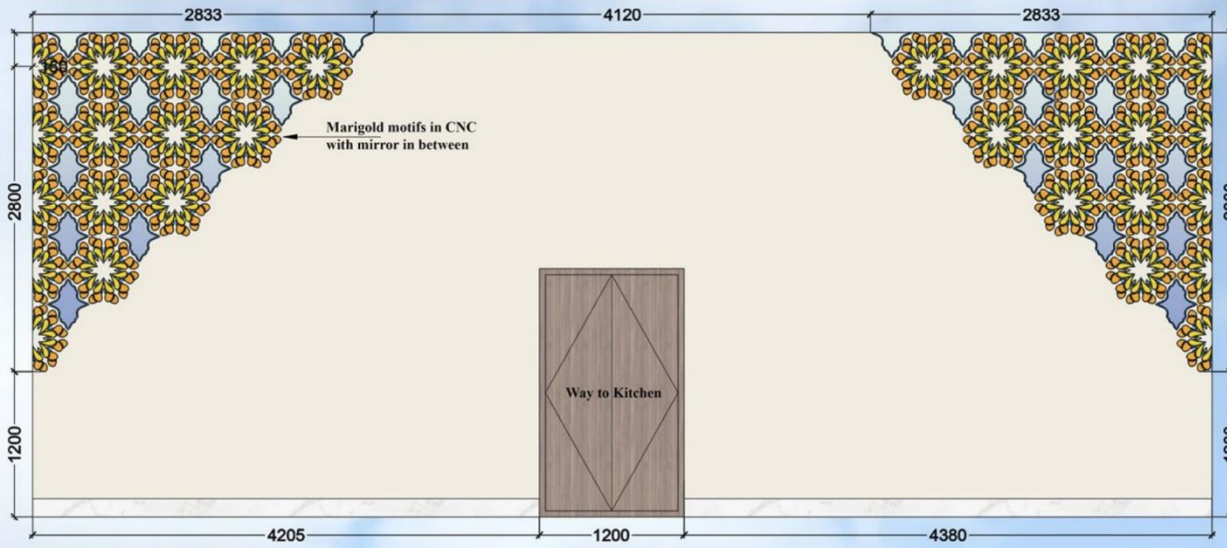
DARIYA- HOMAGE TO RIVER



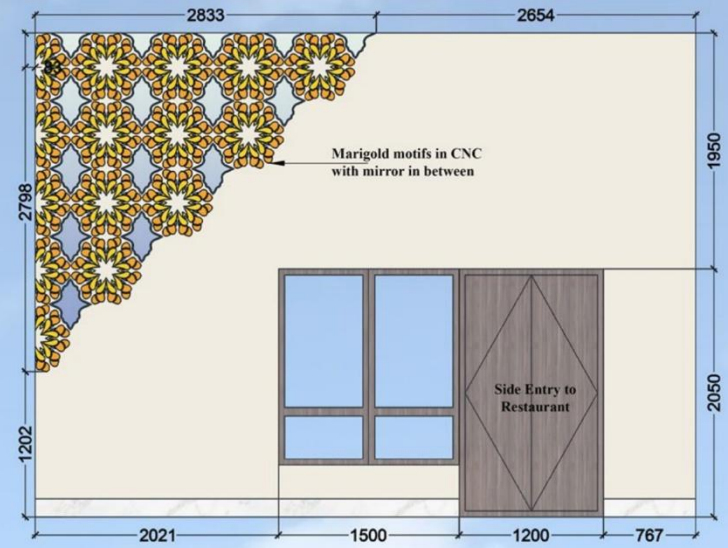
INDOOR SEATING VIEWS



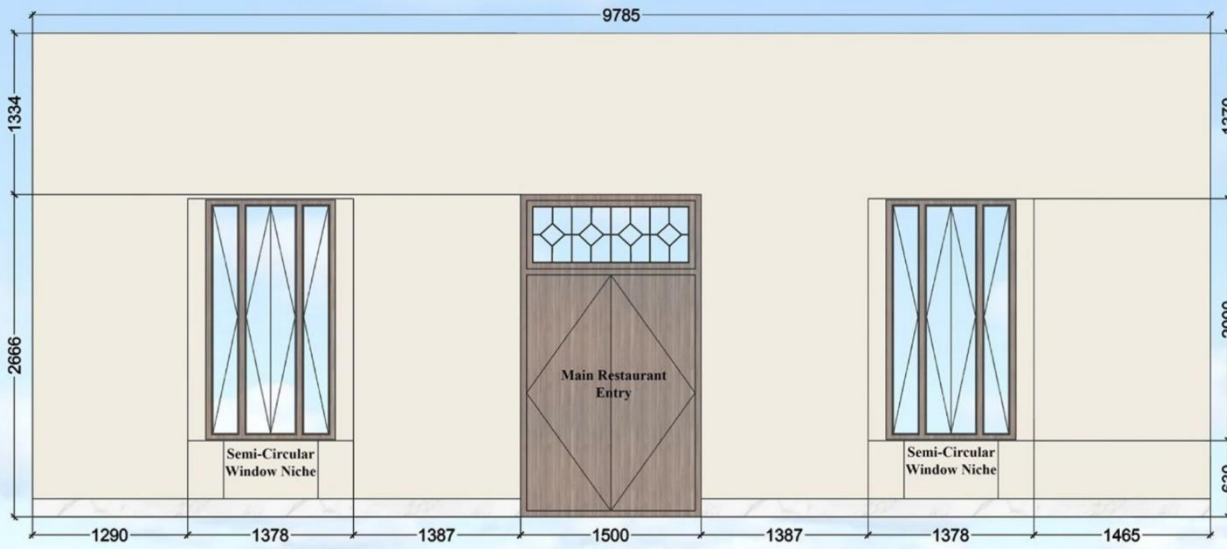
DARIYA- HOMAGE TO RIVER



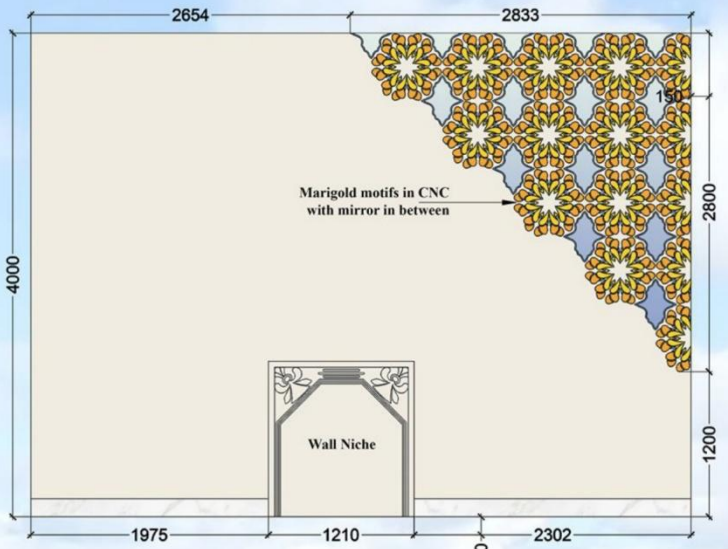
ELEVATION-A



ELEVATION-B



ELEVATION-C



ELEVATION-D

DARIYA- HOMAGE TO RIVER

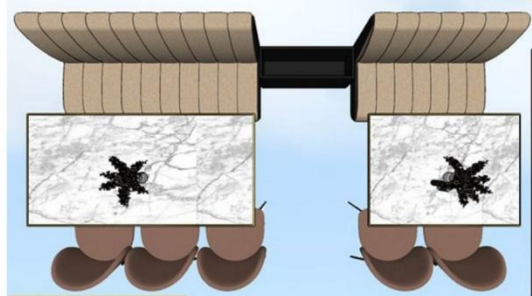




INDOOR SOFA SEATING VIEW



INDOOR SOFA SEATING FRONT ELEVATION



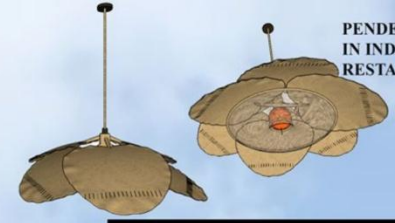
INDOOR SOFA SEATING TOP VIEW



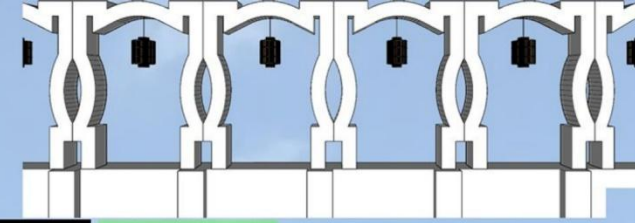
HOSTESS DESK FRONT ELEVATION



HOSTESS DESK VIEW



PENDENT LIGHTS USED IN INDOOR RESTAURANT SEATING



DECORATIVE WALL FACING THE RIVER

PENDENT LIGHTS USED IN OUTDOOR SEATING



OUTDOOR 4-SEATER SEATING TABLE IN CARRARA ITALIAN TOP AND WOODEN FRAME CHAIR



TILE PATTERN USED IN INDOOR & OUTDOOR FLOORING

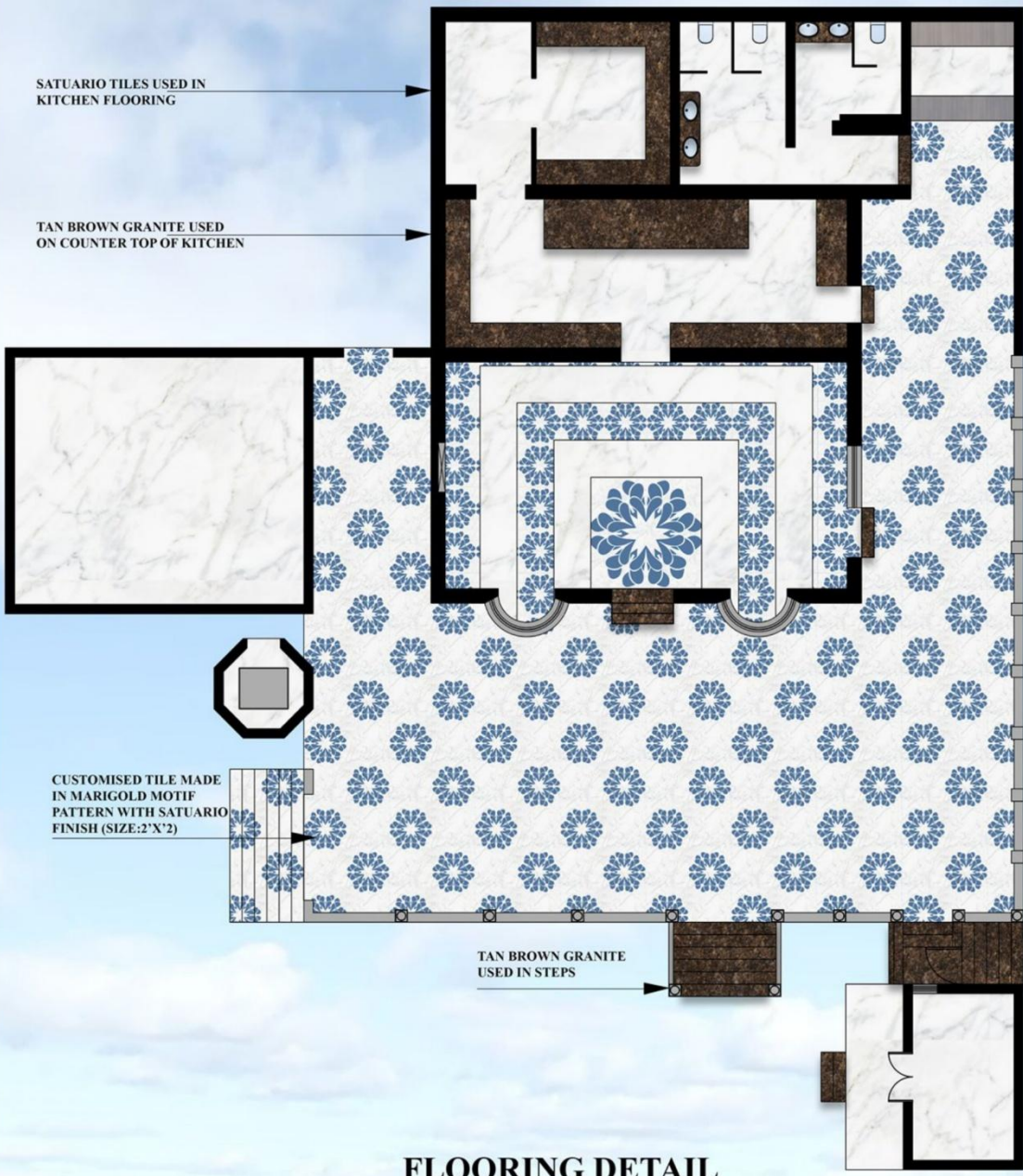
TAN BROWN GRANITE USED IN STEPS AND COUNTER TOP OF KITCHEN & TOILETS

CARRARA ITALIAN MARBLE USED IN TABLE TOP OF OUTDOOR & INDOOR TABLES

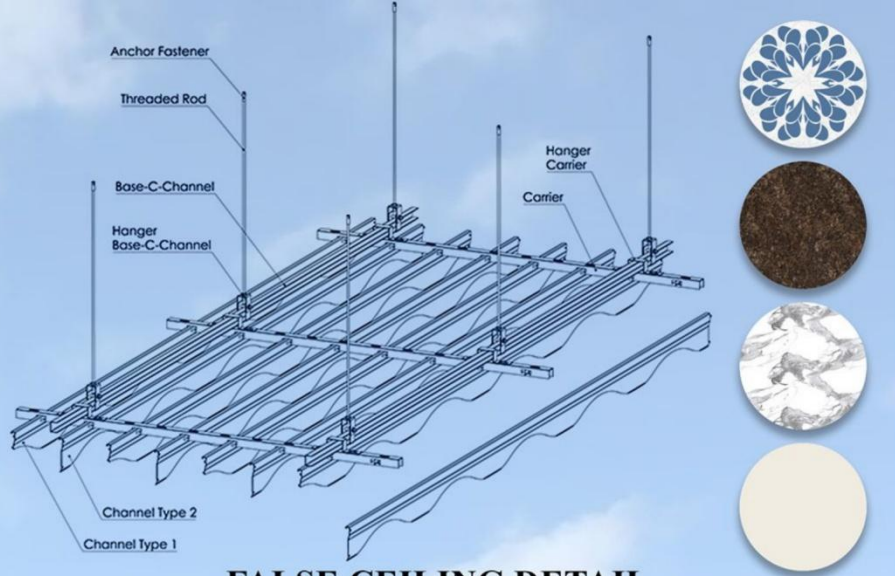
MORNING GLORY-0765 SHADE PAINT

DARIYA- HOMAGE TO RIVER





**FLOORING DETAIL**



**FALSE CEILING DETAIL**



**SITE PLAN**

**DARIYA- HOMAGE TO RIVER**



# STUDIO 2.11

## RETAIL STORE DESIGN

### DESIGN BRIEF

The objective of this exercise was to design a retail store that reflects the brand's identity and creates an immersive customer experience.

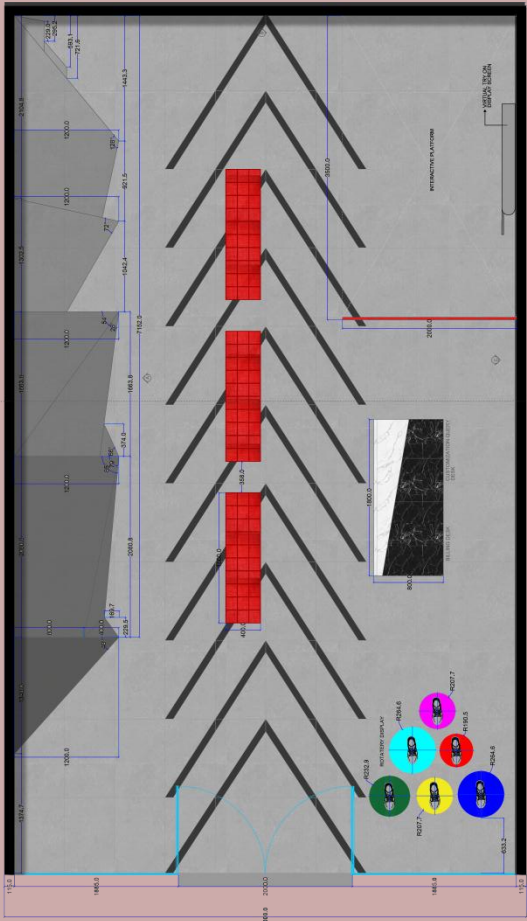
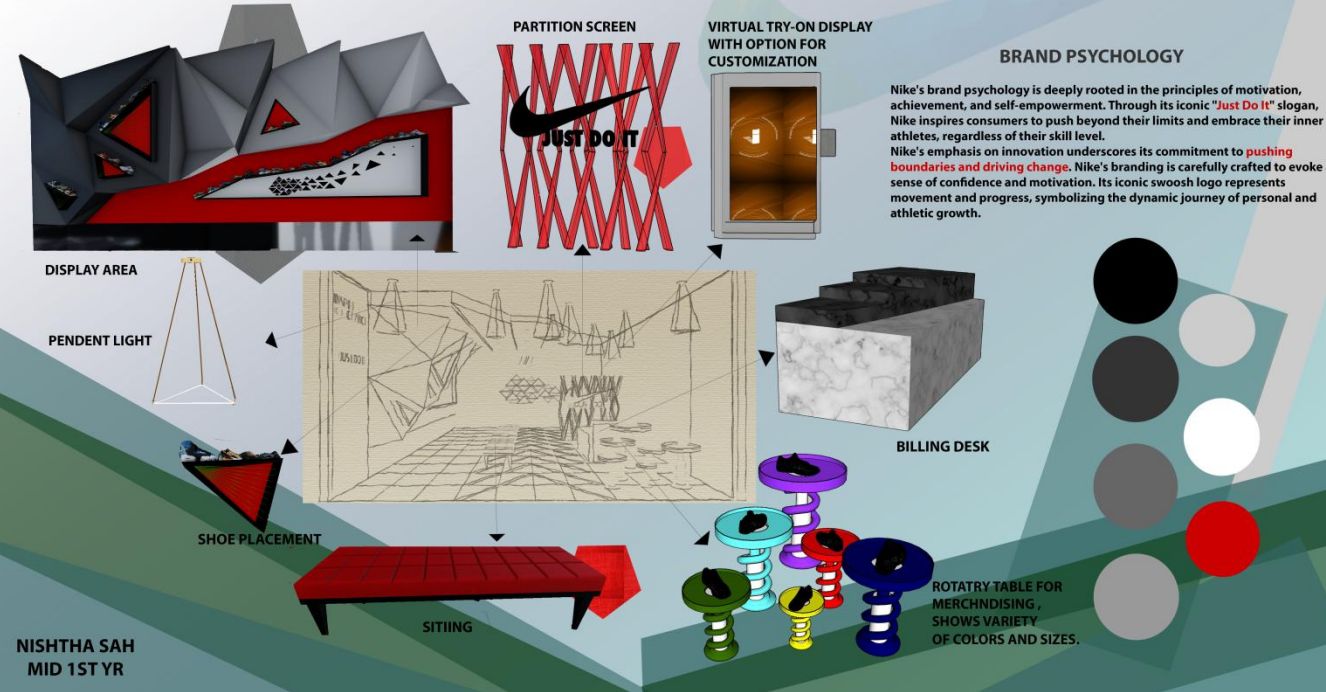
#### CONCEPT

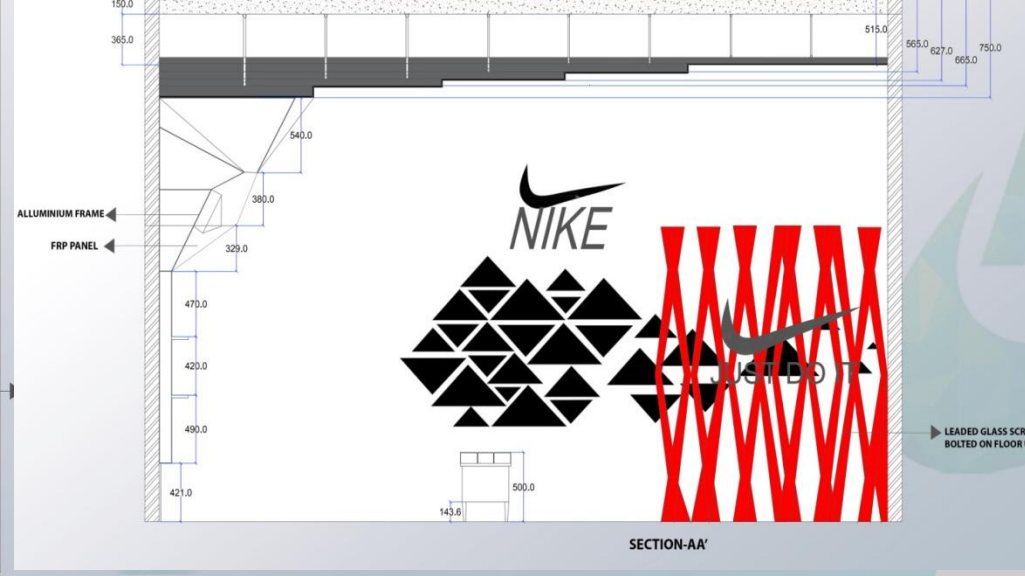
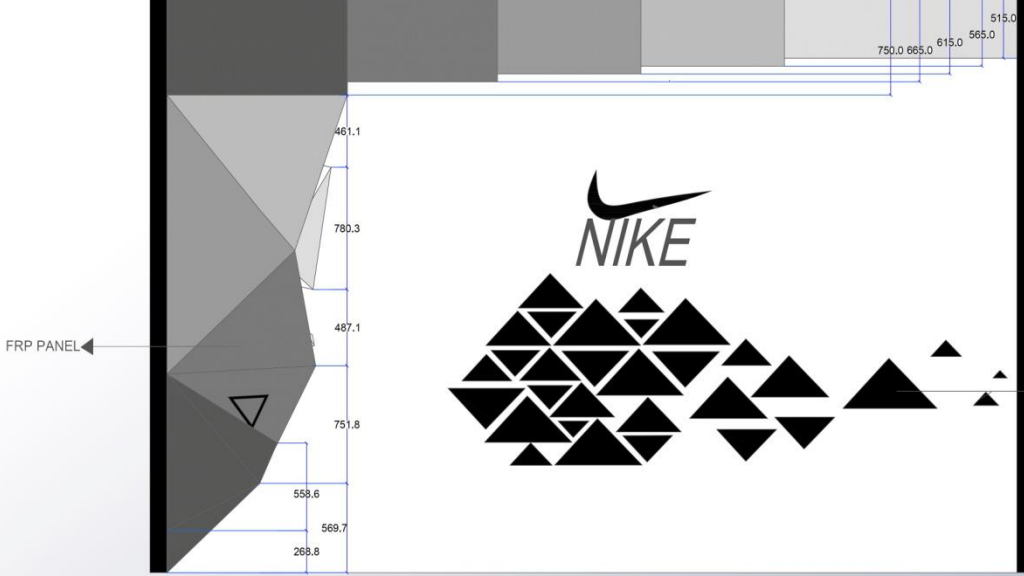
The interior design of the Nike shoe store embodies the essence of energy, innovation, and modernity. The store's aesthetic is defined by a sophisticated palette of grey tones, creating a sleek and contemporary atmosphere that reflects Nike's cutting-edge reputation. Grey walls, flooring, and fixtures serve as the perfect neutral backdrop, allowing the vibrant products and dynamic design elements to stand out.

Central to the store's design are striking triangular motifs, symbolizing movement and forward momentum. These triangles, integrated into various elements such as shelving, display units, and architectural features, add a sense of dynamism and energy to the space. This bold color is used in signage, seating areas, and feature displays, drawing attention and injecting a sense of vitality. The red accents contrast sharply with the grey tones, creating a visually stimulating environment that energizes customers and enhances the shopping experience.

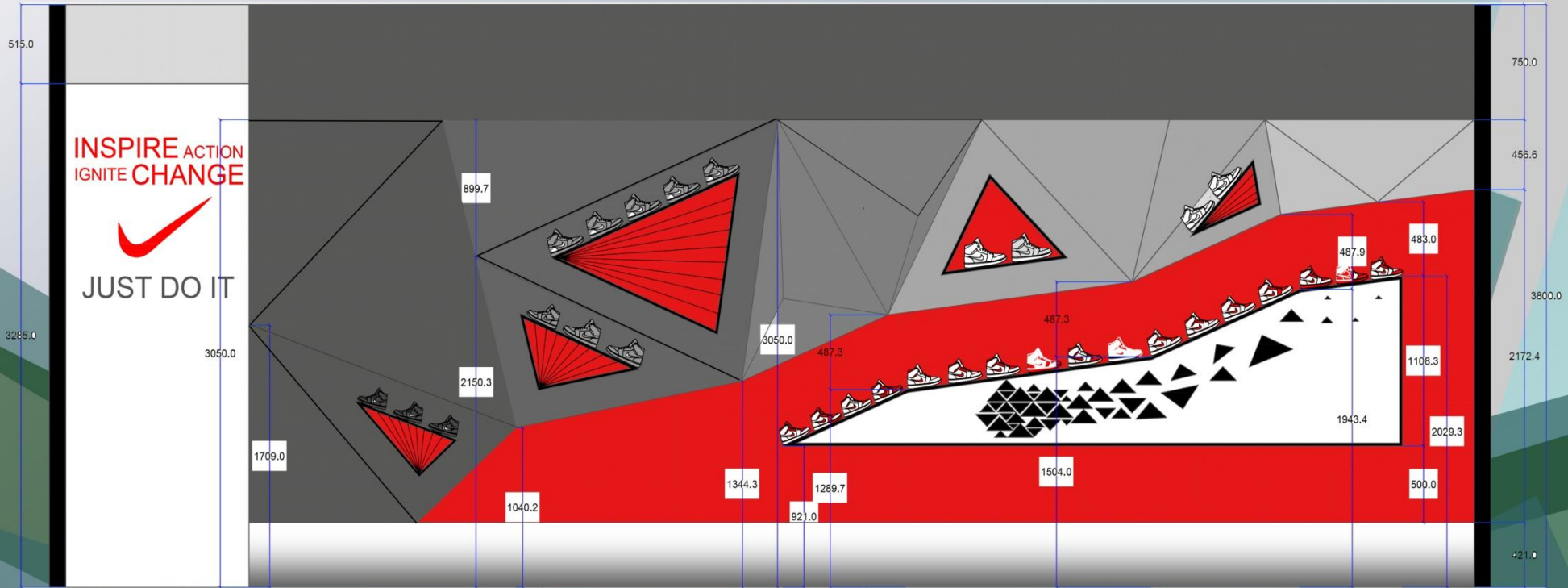
The area is dedicated to Virtual Try-On Display stations, where customers can virtually try on different shoe models using augmented reality mirrors that overlay digital images of shoes onto their feet. Adjacent to these stations is the Customization Zone, an interactive area with touch-screen display that allow customers to design their own shoes by selecting colors, materials, and personalized elements.

#### RETAIL STORE : NIKE SHOES





ELEVATION B



DISPLAY WALL (ELEVATION A)





# STUDIO 3.1

## DESIGN BRIEF

The objective of this exercise was to understand in depth, the factors influencing experiential interior design, space usage and spatial quality while planning and designing hotel of different categories.

### CONCEPT

#### "TIME TRAVELER'S SANCTUARY"

The theme revolves around the rich history of the place, transporting guests through different time periods, each represented by distinct design elements and interactive experiences.

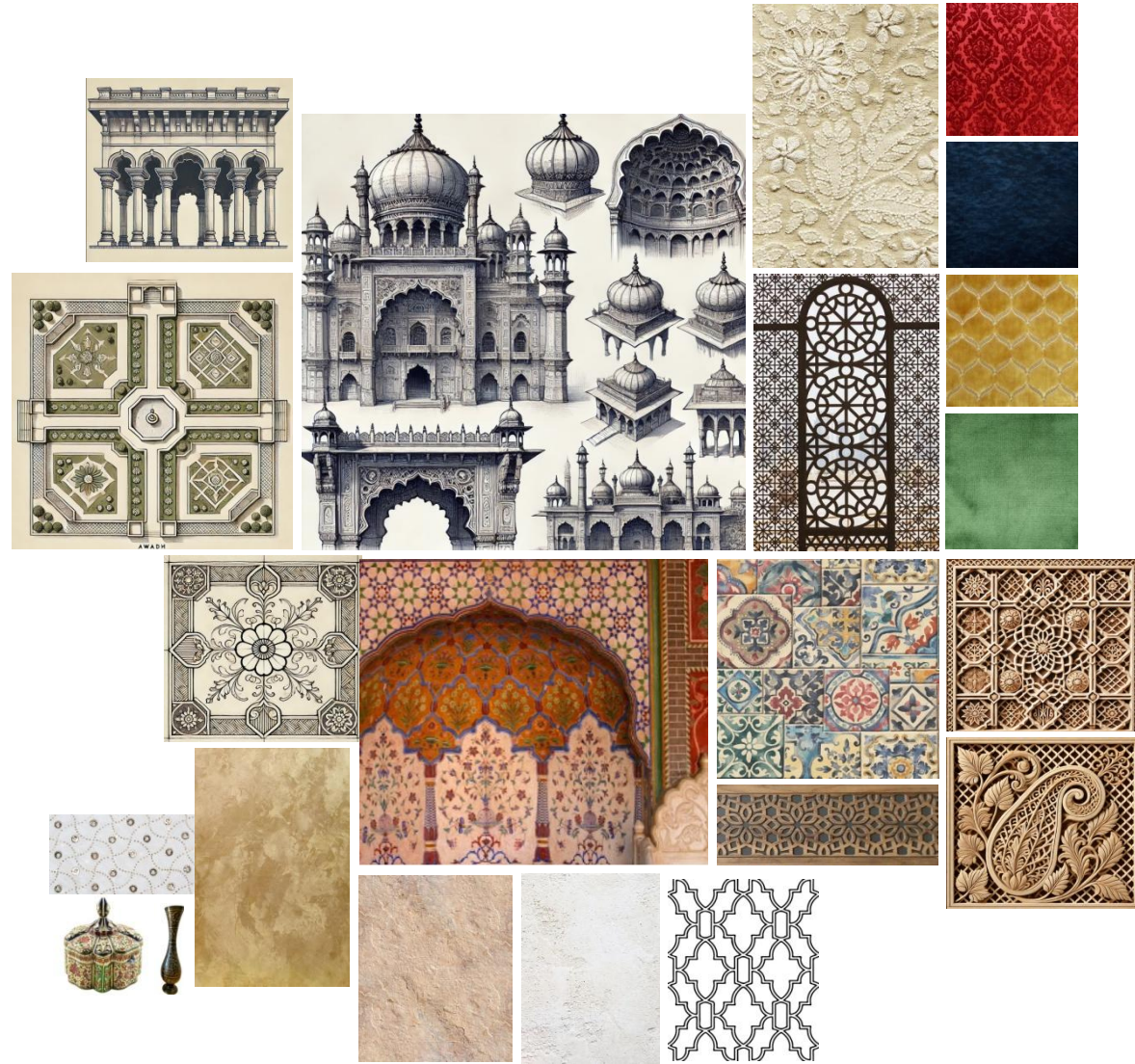
A unique blend of the golden eras of Lucknow-Nawabi, Mughal and Colonial influences can be incorporated in design to provide guests, a luxury experience infused with history, culture and the soul of Lucknow.

## HERITAGE HOTEL DESIGN

- Mood board is inspired by local the region's history and cultural richness which is reflected by using a unique blend of warm colour tones, traditional materials, natural textures of stones, wooden carvings, ornated metal work and other regional crafts like chikankari and mukaish work decorative panels and plush upholstery.
- Day places (like lobby, lounges and cafes) have light and airy tones with accents of mustard and sage green while evening places (like fine-dine, banquet, bar and lounge) have rich and warm tones with highlights of deep reds and Prussian blue.

| MOOD |

OPULENT  
SOPHISTICATED  
REGAL  
SERENE  
TIMELESS



# 1. RECEPTION

## DESIGN ELEMENTS

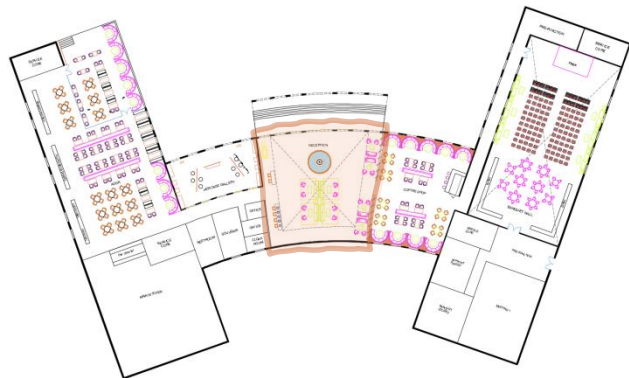
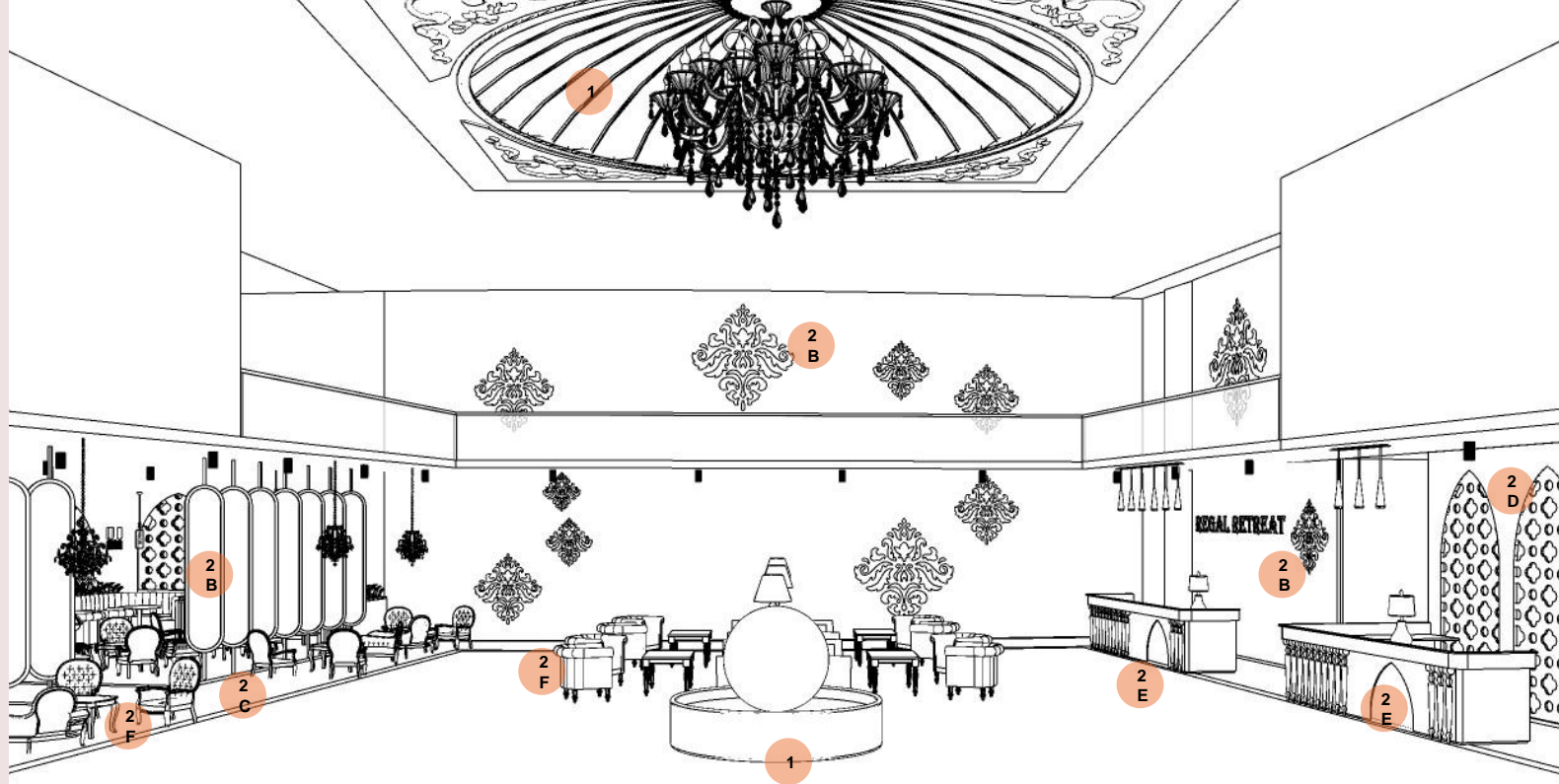
### 1. CONCEIRGE AND ARRIVAL

Guests are welcomed by a serene fountain that reflects the rich cultural heritage of Lucknow, echoing the **Nawabi, Mughal** and **Colonial influences**. Above the fountain, a traditional crystal chandelier hangs from the dome ceiling, adorned with gold leafing, adding to the grandeur of Awadh's cultural essence.

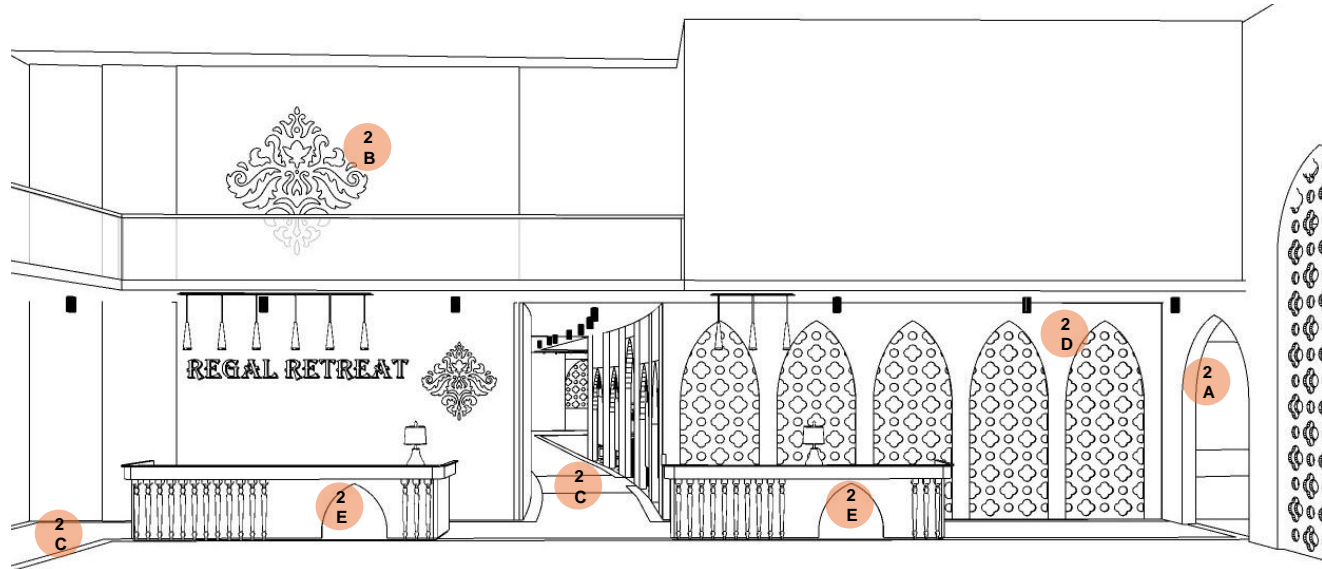
### 2. LOBBY DESIGN

The lobby highlights **Chikankari craftsmanship** celebrating region's traditional art.

- Stucco patterns on the arches are inspired by **chapai block printing**.
- Chikankari motifs** incorporated in fabric screens, wall designs and brass inlay within stone finishes.
- The same motif continues in flooring in form of **handpainted tiles** along with **stone flooring**.
- Quatrefoil-patterned jaalis** add elegance behind the info desk.
- The reception counter and info-desk are crafted in wood with a layer of **charpai-style legs** at the front, giving a nostalgic, traditional touch.
- The furniture draws inspiration from **traditional Awadhi styles**, featuring carved wooden elements and intricate patterns paired with **plush upholstery** adding comfort and luxury.



## KEY PLAN



# RECEPTION

3D RENDERINGS

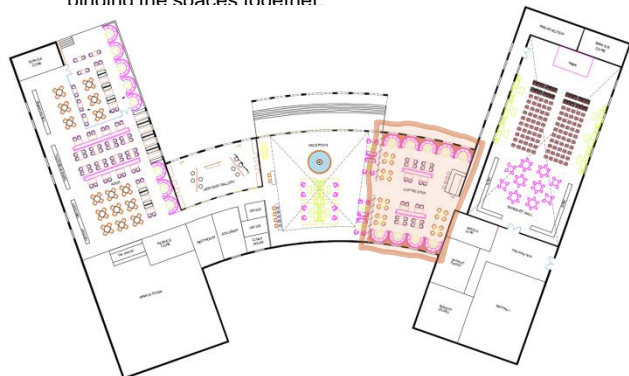
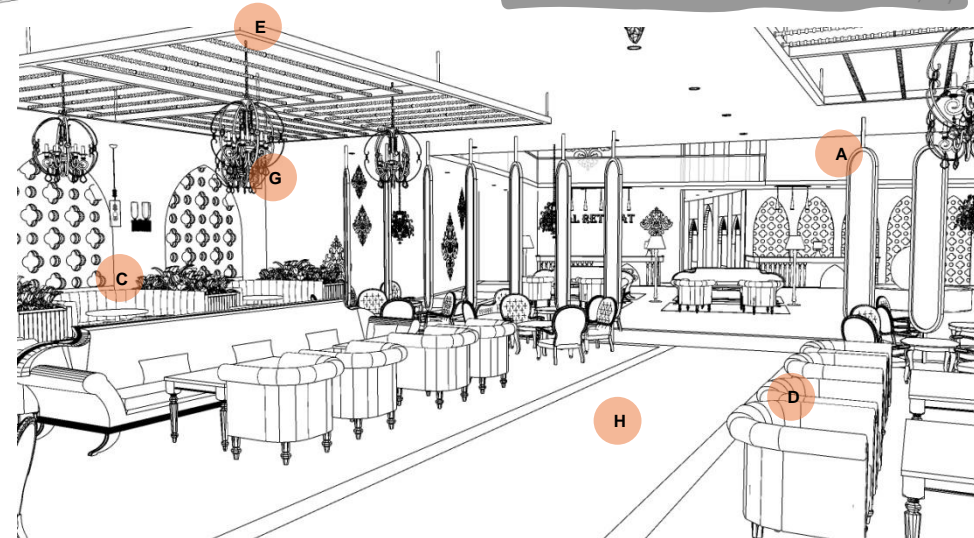
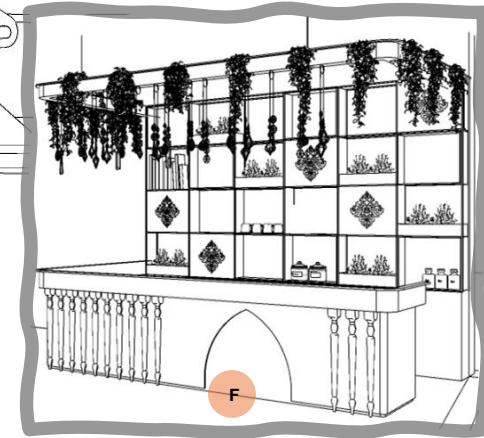
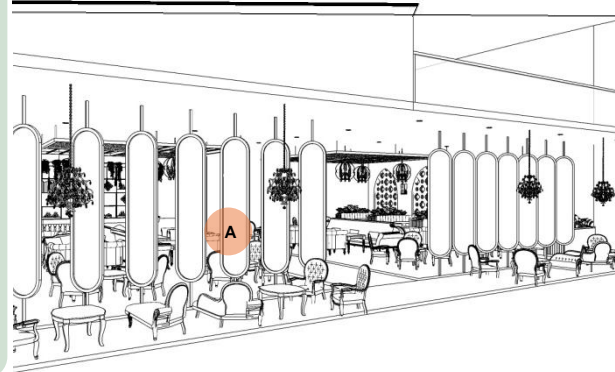
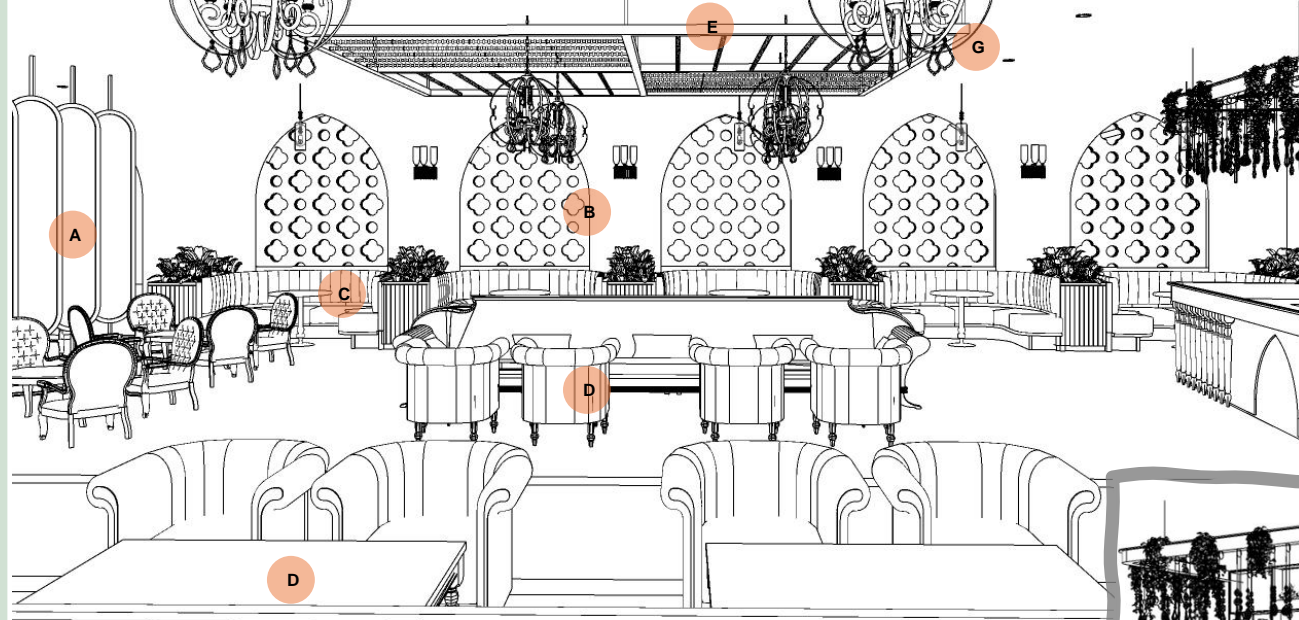


## 2. COFFEE SHOP

### DESIGN ELEMENTS

The coffee shop extends seamlessly from the reception area, continuing the design language.

- a) **Chikankari screens** in the lobby offer glimpses into the coffee shop, creating intrigue.
- b) **Quatrefoil jaalis** along the façade enhance cross-ventilation while fostering a serene atmosphere.
- c) Round sofas, placed near the jaalis, provide cozy, private spaces for conversations.
- d) The furniture mirrors the design style of the lobby to ensure visual consistency.
- e) A wooden ceiling with matching elements from the coffee counter ties the seating areas together.
- f) The coffee counter design echoes the reception counter, featuring **charpai-style legs**, with a wooden backwall etched in **Chikankari motifs**. A bulkhead above the counter adds charm with **vintage-style crystal pendants** paired with greenery.
- g) The space is further elevated with **wrought iron lights adorned with crystals**, adding a refined elegance to the overall ambiance.
- h) **Hand-painted tiles** from reception areas continues across the central aisle binding the spaces together.



### KEY PLAN

# COFFEE SHOP

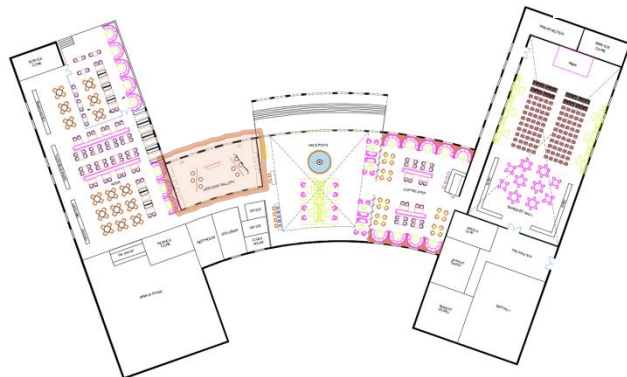
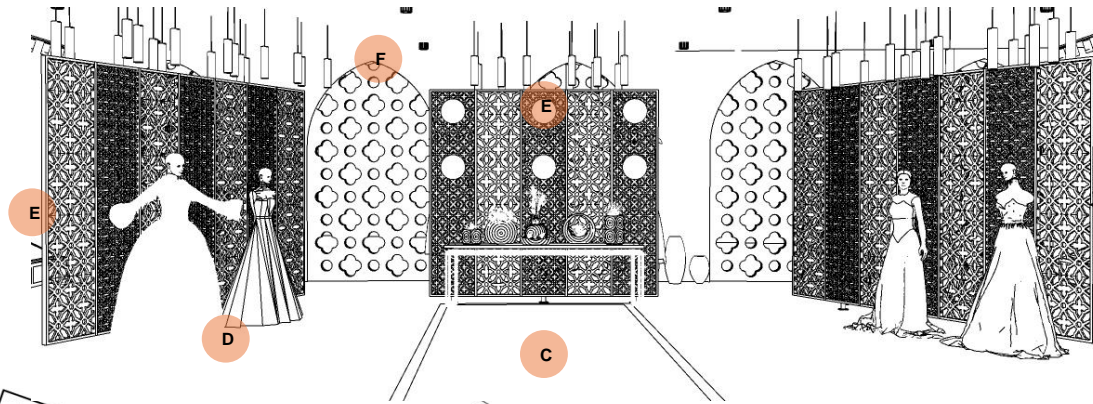
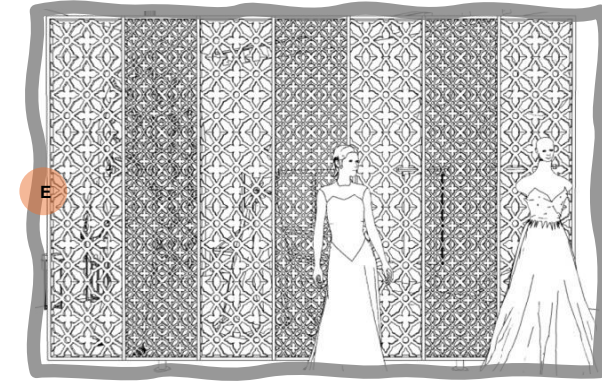
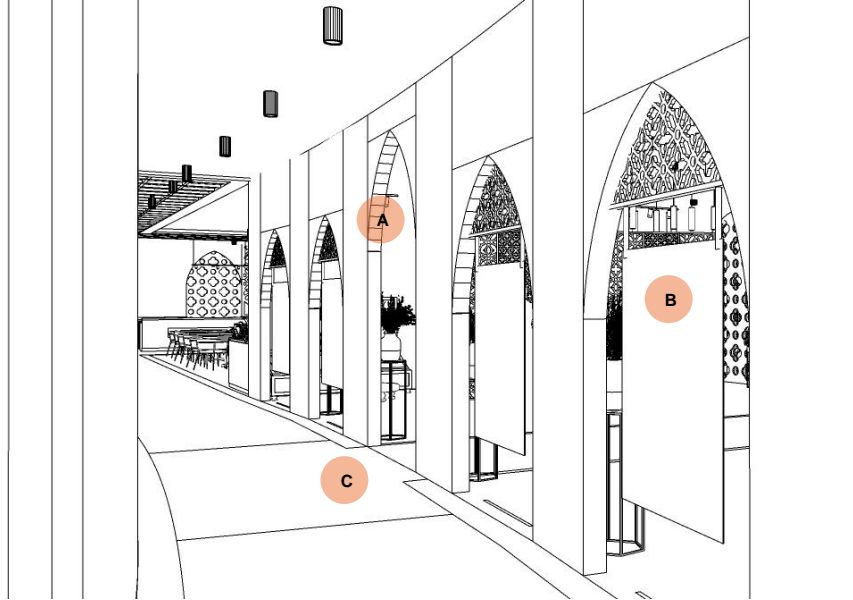
3D RENDERINGS



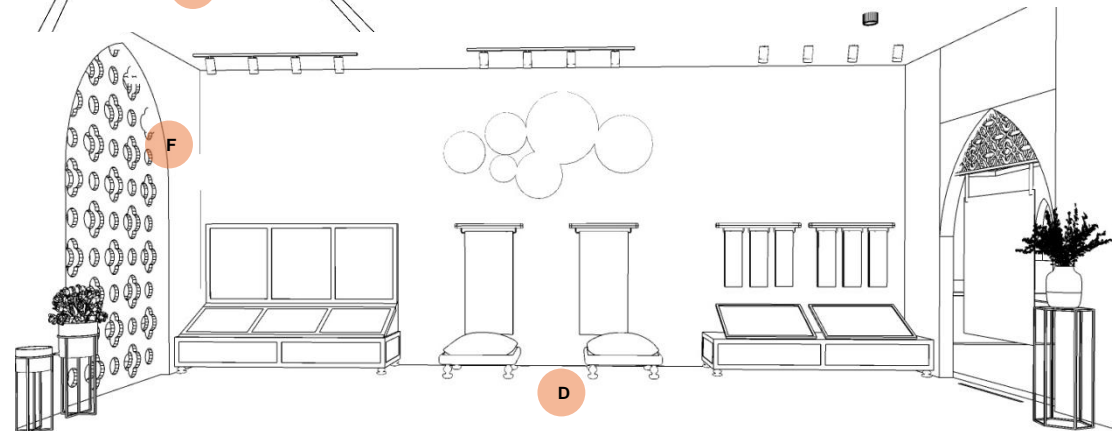
### 3. HERITAGE GALLE

#### DESIGN ELEMENTS

- a) The gallery's entrance is marked by **arched openings**, with one central arch standing slightly taller than the others.
- b) The other arches by the side offer a visual connection but are partially blocked by hanging rugs and handwoven fabrics, adding depth and intrigue.
- c) The **hand-painted tile flooring** from the corridor extends into the gallery, drawing attention to the central heritage display.
- d) The gallery is organized into self-exploring zones. Displays along the walls showcase the **traditional crafts of Awadh**.
- e) **Handcrafted wooden jaalis** serve as backdrops for the central displays, enhancing the space featuring motifs in two different scales, thoughtfully combined to create captivating patterns.
- f) The **quatrefoil jaalis** bring in natural light, beautifully illuminating delicate pieces, especially those with intricate details or dhup-chau (light-and-shadow) effects.



#### KEY PLAN



# HERITAGE GALLERY

3D RENDERINGS

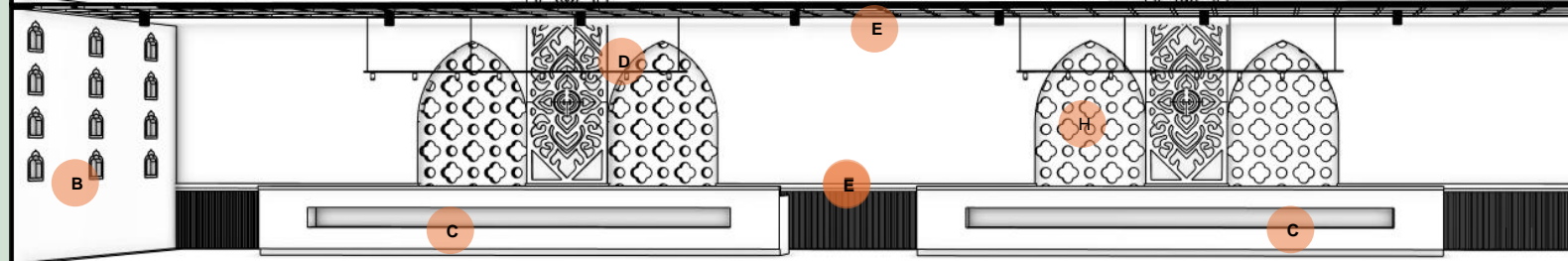
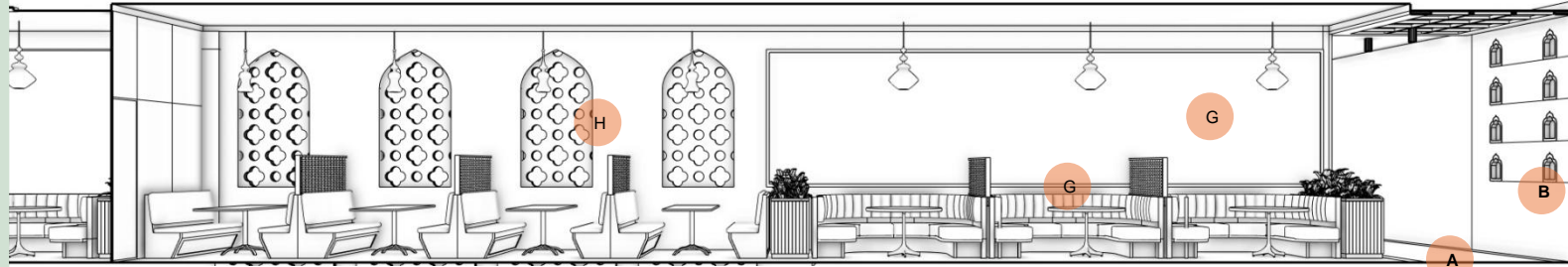




# 4. ALL DAY DINING

## DESIGN ELEMENTS

- a) The dining area flows seamlessly with **hand-painted tiles** continuing through the circulation spaces.
- b) On the left wall, niches at either end feature **miniature fresco paintings**, while a **vintage-style mirror** with a carved wooden frame at the center evokes the old world charm.
- c) The **buffet wall** showcases counters crafted from **natural stone**, harmonizing with the flooring. **Tiled niche** within the buffet counter is softly illuminated adding a subtle elegance.
- d) At the back, **quatrefoil jaalis** within the arches frame a **hand-carved wooden panel**, lending the space a touch of heritage craftsmanship.
- e) Below the buffet, **wainscoting** defines the service side, while overhead, a **wooden ceiling with intricate detailing** draws the eye upwards, adding warmth and sophistication.
- f) Similar **wooden ceiling** is done in the central seating area, tying the space together.
- g) Along one wall, **curved sofas with low partitions** create intimate enclosures. The backwall is done in beautiful **hand embroidered wallpaper** and partitions above the sofa backs, feature **wooden rails framed by borders**, recalling the charm of old railings.
- h) On both side walls, **quatrefoil jaalis** bring in streams of natural light and airy atmosphere.
- i) The space also connects to **landscaped seating areas**, offering a seamless blend of indoor and outdoor dining.



KEY PLAN

# ALL DAY DINING

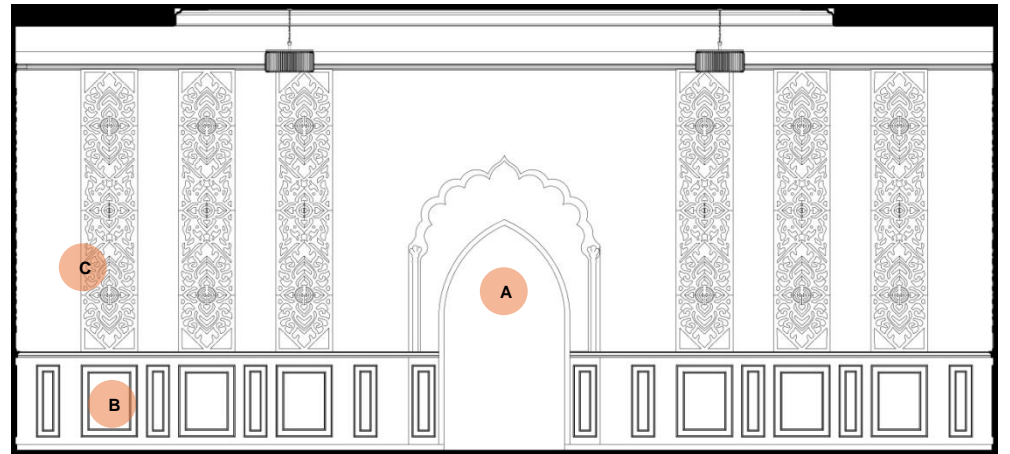
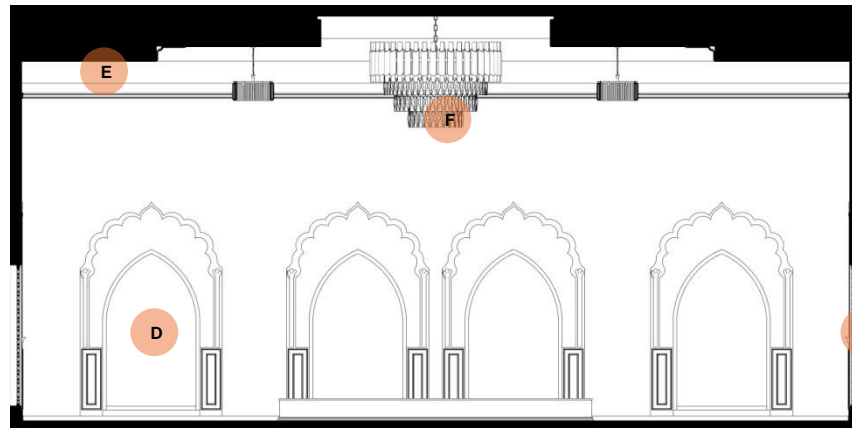
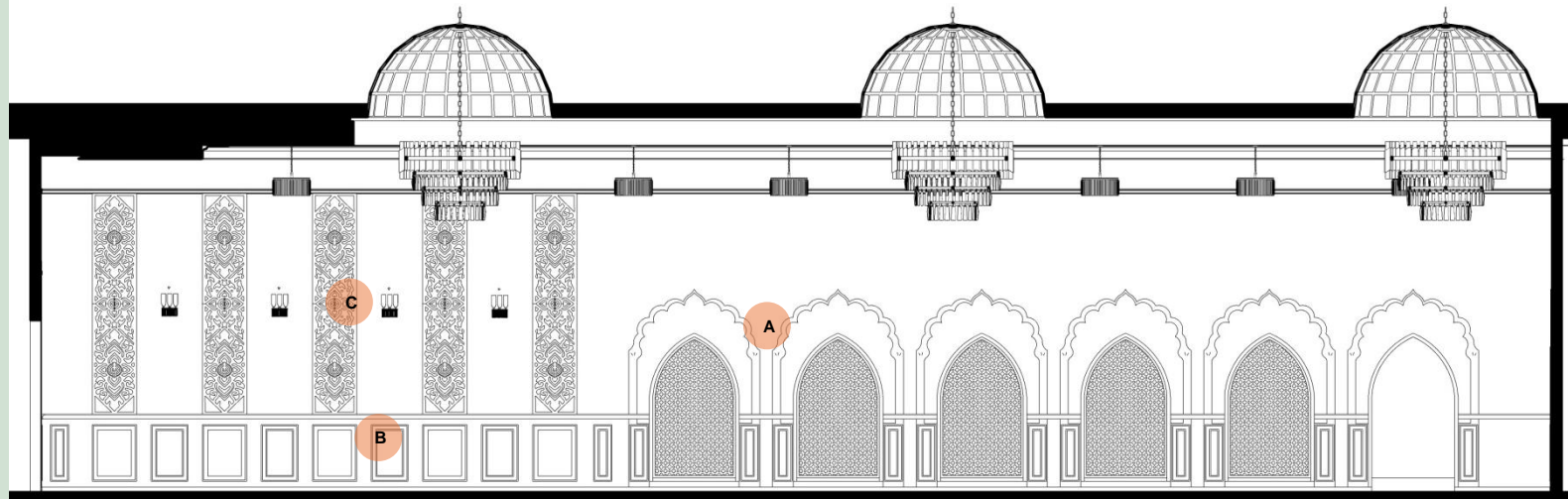
3D RENDERINGS



# 5. BANQUET HALL

## DESIGN ELEMENTS

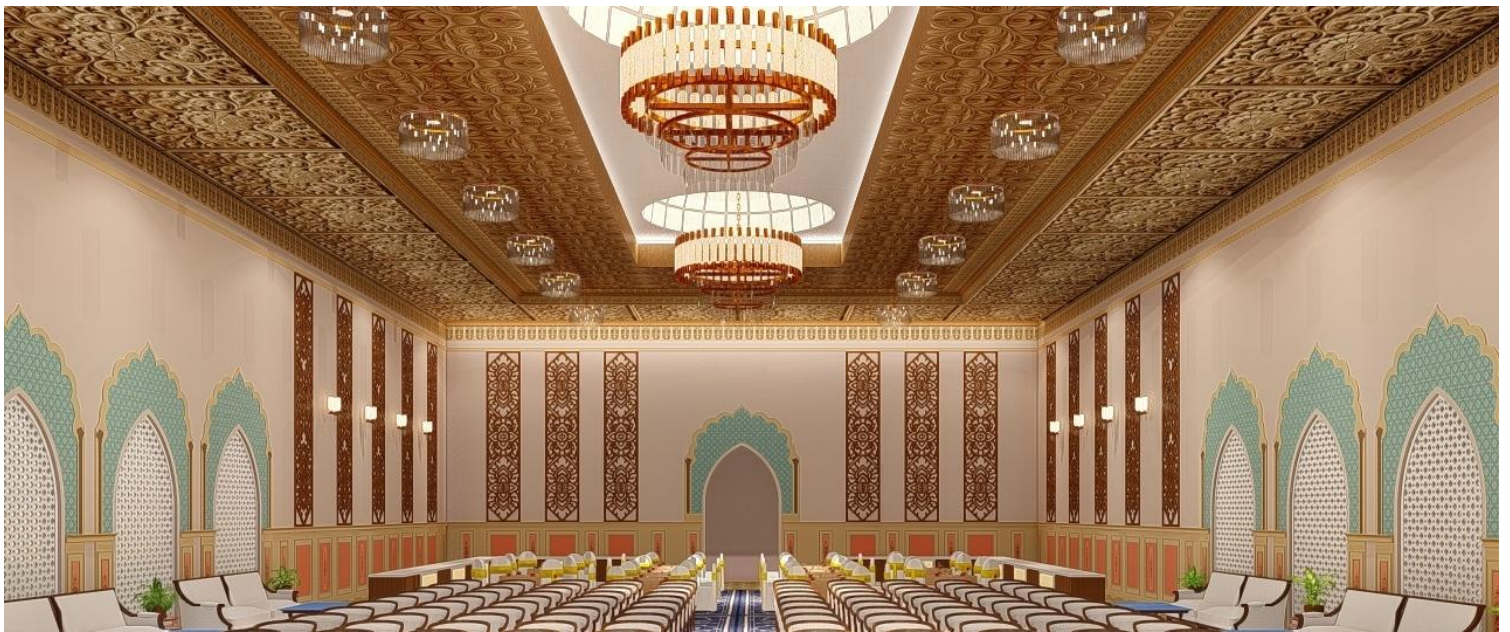
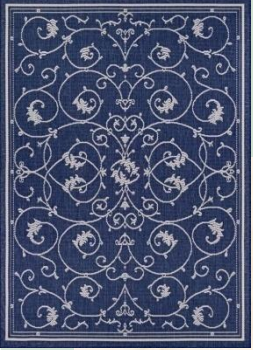
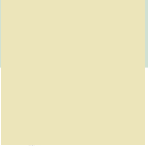
- a) Inspired by the **baradari** concept, the double height banquet hall features 12 openings, out of which two are grand entries that echo the **architectural style of Rumi Darwaza** and the other openings are filled with **quatrefoil jaali**.
- b) Alongside the buffet counter, **wainscoting** with intricate **miniature art** in teal and muted red undertones adds contrast to the space's palette.
- c) **Wooden jaali** runs above the wainscoting, with wall sconces placed between them, enhancing the layered detailing.
- d) The stage backwall share a cohesive design language featuring similar arches, enriched with **Pietra-dura artwork** within each arch, creating a dramatic focal point.
- e) The ceiling is beautifully tied, with **carved wooden panels** running along the corners.
- f) In the center, three **grand crystal chandeliers** hang within domed recesses, highlighting the central aisle and adding a touch of grandeur.
- g) The flooring combines **carpet** in seating areas for comfort and warmth, with **Italian marble** in the



KEY PLAN

# BANQUET HALL

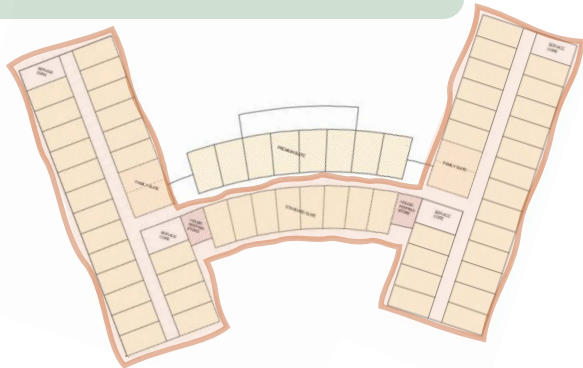
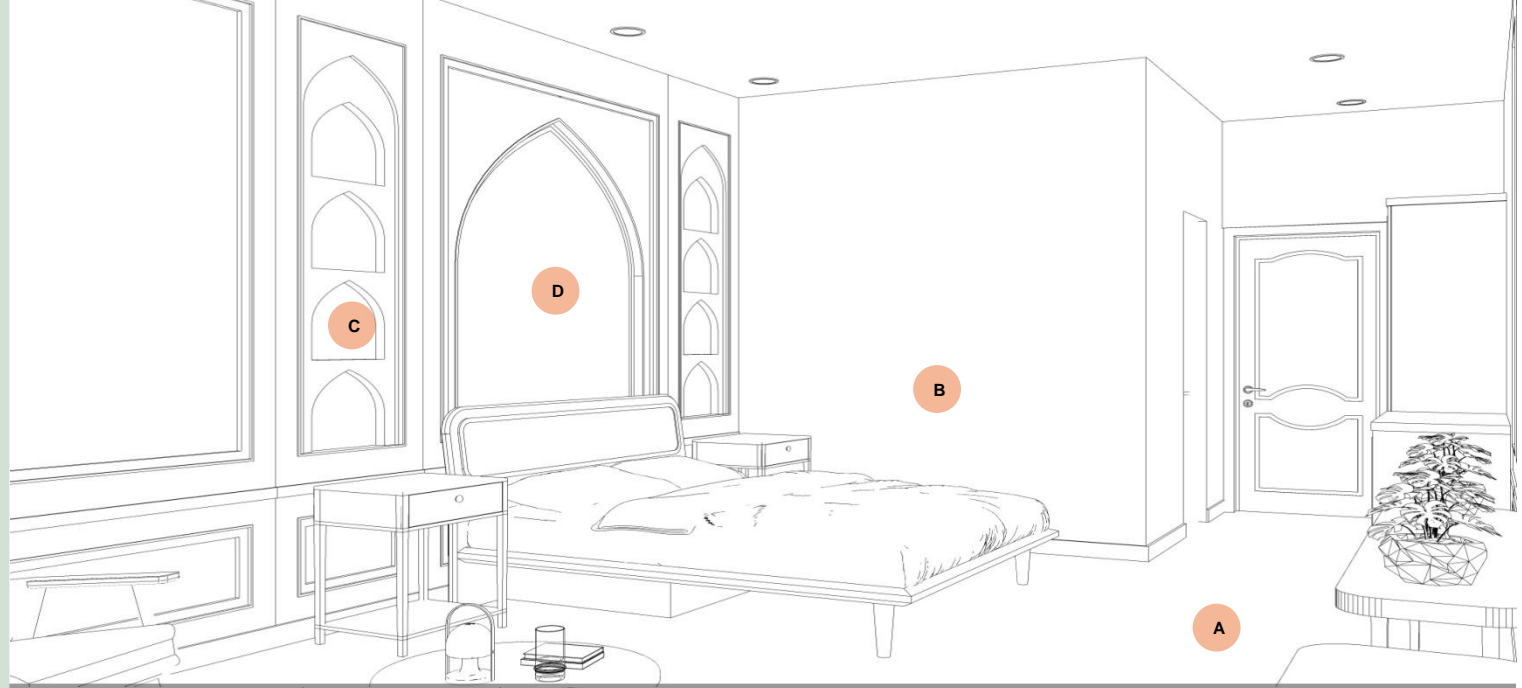
3D RENDERINGS



## 6. DELUXE ROOM

### DESIGN ELEMENTS

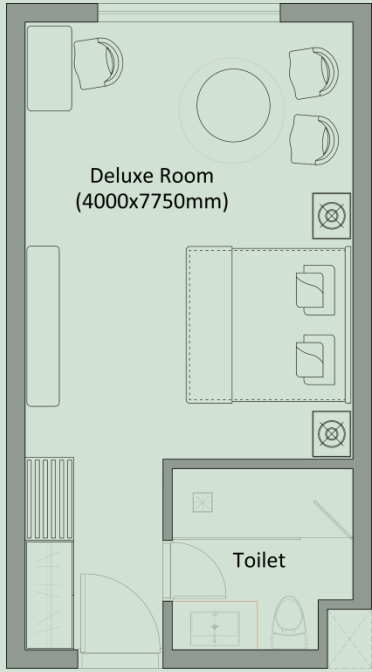
- a) The room showcases the elegance of **Awadhi craftsmanship** with a minimalistic design that fosters a calm and relaxing atmosphere.
- b) Natural materials like marble, wood, jute, rattan and **ghutai plasterwork**, reminiscent of old Awadhi havelis, enhance the traditional aesthetics.
- c) The **bed back and TV wall** feature minimalistic paneling, accented by a series of **cusped arches** in soft, subtle tones.
- d) **Block-print-inspired upholstery** and wall artwork, drawing from **jaali buti motifs**, celebrate the traditional **chapai crafts** of Lucknow, adding a touch of cultural charm.
- e) A **large window** provides a stunning view of the **Charbagh-style landscaped gardens**, blending the serenity of the outdoors with the room's tranquil interiors.



### KEY PLAN

# DELUXE ROOM

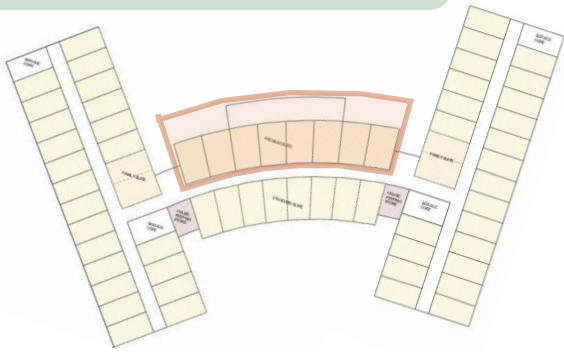
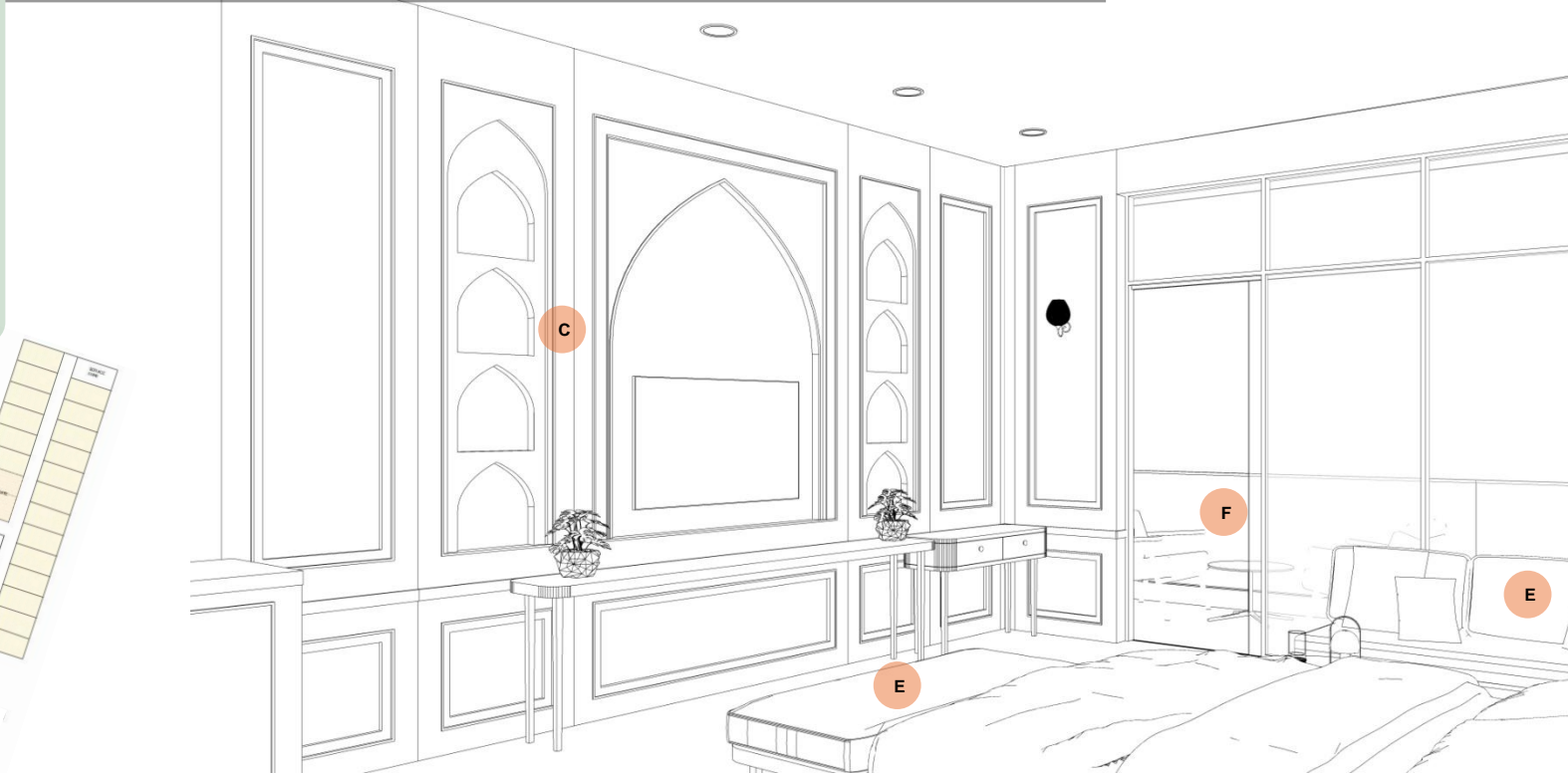
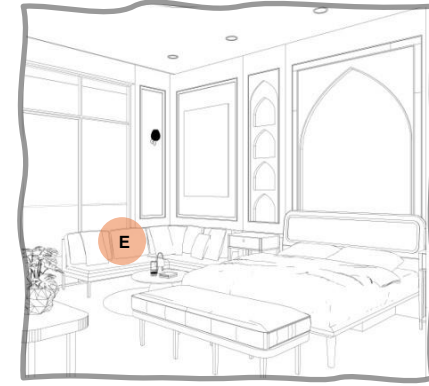
3D RENDERINGS



# 7. PREMIUM SUITE

## DESIGN ELEMENTS

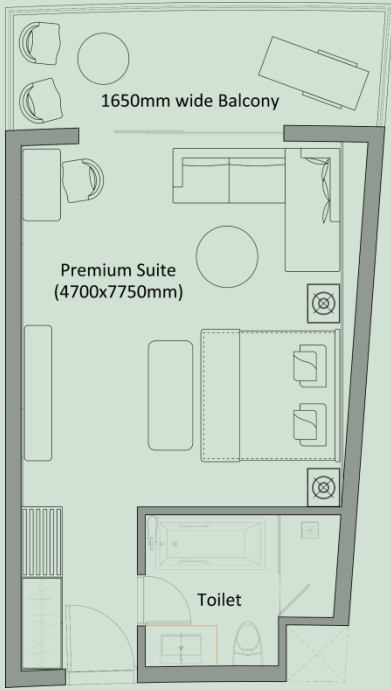
- a) The room embodies the essence of **Awadhi craftsmanship**, with a minimalistic yet luxurious design to create a calm and relaxing atmosphere.
- b) Natural materials like marble, wood, jute, rattan and **ghutai plasterwork**, reminiscent of old Awadhi havelis, enhance the traditional aesthetics.
- c) The **bed back and TV wall** feature minimalistic paneling, accented by a series of **cusped arches** in monochromatic tones laying more focus on intricately crafted **Zardosi jaal-inspired wall art**, showcasing fine detailing as a tribute to local crafts.
- d) **Block-print-inspired upholstery** and wall artwork, drawing from **jaali buti motifs**, celebrate the traditional **chapai crafts** of Lucknow, adding a touch of cultural charm.
- e) For premium suites, ottoman and daybed provide added comfort and luxury.
- f) A **large window with a private balcony** allows guests to enjoy hookah and drinks, overlooking the **Mughal inspired Charbagh landscape gardens** for a serene outdoor experience.



## KEY PLAN

# PREMIUM SUITE

3D RENDERINGS





# Batch of 2023-25



**SUMEDHA GUPTA**  
**ARCHITECT**

**Qualification:** B.Arch- Vastukala Academy, Delhi '2018,  
Pursuing M.Arch(MID)- FOAP, AKTU

**Work Experience:** 4 yrs- Genesis Architects, Delhi, 3 Year Freelancing

**Internship Experience:** 9 months Genesis Architects Pvt. Ltd,  
Delhi, 1 month Abhikarm, Lucknow

**Contact:** 9654982620 , **Email:** sumedha9603@gmail.com

**Area of interest:** Hospitality and Retail

[https://drive.google.com/file/d/1CB-ISQ4zAhrYgk8JzY0r7T3Fp4-RmA3T/view?usp=drive\\_link](https://drive.google.com/file/d/1CB-ISQ4zAhrYgk8JzY0r7T3Fp4-RmA3T/view?usp=drive_link)



**NISHTHA SAH**  
**ARCHITECT**

**Qualification:** B.Arch-I.K.Gujral Punjab Technical University, MOHALI '2023,  
Pursuing M.Arch(MID)- FOAP, AKTU

**Internship Experience:** 6 months (P.M DESIGNS, JAIPUR),  
1 month (STUDIO 0522, LUCKNOW)

**Contact:** 7814495348 , **Email:** nishthasah09@gmail.com

**Area of interest:** Commercial

[https://drive.google.com/file/d/1P9Y3KEalsd1V1pAkpufCeWPXndz77f/viaw?usp=drive\\_link](https://drive.google.com/file/d/1P9Y3KEalsd1V1pAkpufCeWPXndz77f/viaw?usp=drive_link)



**JANHVI PRIYA SINGH**  
**ARCHITECT**

**Qualification:** B.Arch-Babu Banarasi Das University, Lucknow '2020,  
Pursuing M.Arch(MID)- FOAP, AKTU

**Work Experience:** 5 Months-Buildwell Architects, Lucknow,  
4 Year Freelancing

**Internship Experience:** 8 months (Civil Consultants, Lucknow),  
2 months (Arinem consultancy Pvt. Ltd.), 1 month (Siddarth Raj &  
Associates, Lucknow)

**Contact:** 7652064085 , **Email:** janhvipriyasingh@gmail.com

**Area of interest:** Commercial

[https://drive.google.com/file/d/1rehDnRXR7z9otx2y65DACK-eJUVLnCvA/view?usp=drive\\_link](https://drive.google.com/file/d/1rehDnRXR7z9otx2y65DACK-eJUVLnCvA/view?usp=drive_link)

## DISSERTATION PROJECTS

- GENERATIONAL RESPONSE TO RETAIL DESIGN
- HOW LIGHTING SHAPES COGNITIVE PERFORMANCE AND MOOD
- ROLE OF INFORMATION AND COMMUNICATION TECHNOLOGY IN SHAPING MODERN MUSEUM INTERIORS



**Placement In-Charge: Dr. MEETA TANDON**

Associate Professor, M.ARCH (ID) Coordinator  
+91 9415011843  
tandon.drmeeta@foaaktu.ac.in

**TRAINING AND  
PLACEMENT CELL  
2023-25**

**Student Placement  
Coordinators**

**OUT-REACH  
&  
MEDIA**

SUMEDHA GUPTA  
+919654982620

Availability for joining  
1st August 2025



trainingandplacementcell@foaaktu.ac.in