



LANDSCAPE DESIGN COMPETITION For students in Architecture

TERRA NOVA Redefining Landscapes

A Landscape Design Competition organized by the Faculty of Architecture and Planning, A.P.J. Abdul Kalam Technical University, Lucknow, in collaboration with Landkunstleben, Germany, Terra Nova invites final-year architecture students to envision gardens through a futuristic lens.

With the theme "Futuristic Gardens," the competition focuses on imaginative, forward-thinking landscape solutions that embrace innovation, sustainability, and technology. It aims to showcase visionary approaches that challenge traditional ideas of garden design and explore the evolving role of outdoor spaces in the future built environment.

PATRONS

COORDINATOR



Dr. Vandana Sehgal
Principal and Dean



Dr. Ritu Gulati
Head of Department



Ar. Dorvi Singh
Asst. Professor



**ISHA
VERMA**



**AVANTIKA
UPADHYAY**



**ARJUN
GUPTA**



**AMAANUL
H. KHAN**



**ANAND
PRAKASH**

WINNING ENTRIES

1 ENTRY CODE LS 004471



2 ENTRY CODE LS 004468



3 ENTRY CODE LS 004466



1ST PLACE ● ENTRY CODE LS 004471

GRÜNE RUHE ● ● ● ● ● ● ● ● GARDEN OF EDEN

THE CONCEPT OF GRÜNE RUHE (GREEN SERENITY) MERGES TRANQUILITY WITH A FORWARD-LOOKING APPROACH TO LANDSCAPE DESIGN. IT CELEBRATES NATURE'S CALMING ESSENCE WHILE EXPLORING FUTURISTIC ELEMENTS IN SPATIAL ORGANIZATION, MATERIAL USE, AND PLANT SELECTIONS. BY INCORPORATING INNOVATIVE MATERIALS LIKE GRASS PAVERS AND WHITE CONCRETE BLOCKS, PAIRED WITH DYNAMIC PLANT SPECIES, THE DESIGN CREATES A SERENE YET STIMULATING ENVIRONMENT. THIS CONCEPT NOT ONLY FOSTERS RELAXATION BUT ALSO INVITES JOY & EXCITEMENT.

EXISTING SITE:
THE SITE IS SITUATED NEAR A CEMETERY. THE ADJACENT EMPTY LOT PRESENTS AN OPPORTUNITY FOR LANDSCAPE DEVELOPMENT. TEINHÖFEL, LOCATED IN THE ODER-SPIEE DISTRICT OF BRANDENBURG, IS CHARACTERIZED BY ITS RURAL SETTING, WITH GENTLY ROLLING TERRAIN AVERAGING AROUND 62 METERS IN ELEVATION.

SITE CONSIDERATIONS

Existing Vegetation Access Routes Activity Zones Site Hydrology



Most of the vegetation is placed along the edges of the site providing enclosure. Since the site is bound in the local climate of the village and between two residential areas, the road side has been chosen as a main access point. The placement of the site creates an opportunity for the site to be used as a multipurpose event ground. The pond by the site is 'shallow' in depth than the level of the site and is surrounded by tall reed grass.

SURROUNDING PLANTS



EXISTING MATERIAL PALETTE



This existing material as well as local materials of the context of the site become the basis for the design.

UNIQUE ID: LS004471

SHEET 1

GRÜNE RUHE ● ● ● ● ● ● ● ● GARDEN OF EDEN

SITE LAYOUT



PUBLIC SEATING



PLANT PALLETTE

Plant Name	Family	Common Name	Notes	Image
Linden	Tiliaceae	Tilia cordata	Shade tree	
Weeping Willow	Salicaceae	Salix babingtonii	Shade tree	
Berlin	Salicaceae	Salix babingtonii	Shade tree	
Black Poplar	Salicaceae	Salix babingtonii	Shade tree	
Red Willow	Salicaceae	Salix babingtonii	Shade tree	
Birch	Betulaceae	Betula pendula	Shade tree	
Cornus	Cornaceae	Cornus alba	Shade tree	

SITE SECTION A-A'



UNIQUE ID: LS004471

SHEET 2

TERRA NOVA Redefining Landscapes

The concept of **Grüne Ruhe (Green Serenity)** merges tranquillity with a forward-looking approach to landscape design. It celebrates nature's calming essence while exploring futuristic elements in spatial organization, material use, and plant selections. By incorporating innovative materials like grass pavers and white concrete blocks, paired with dynamic plant species, the design creates a serene yet stimulating environment. This concept not only fosters relaxation but also invites joy & excitement.

It envisions a landscape that adapts to changing needs while maintaining its core identity as a space for pause and connection. Carefully curated zones encourage both solitude and social interaction, offering shaded seating areas, open lawns, and sensory-rich planting pockets.



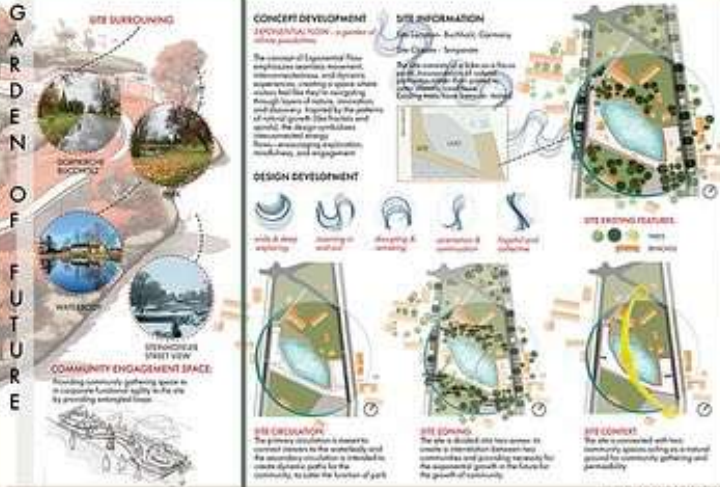
ISHA
VERMA



AVANITIKA
UPADHYAY

ENTRY CODE
LS 004468

GARDEN OF FUTURE



Entry Code: 15004458

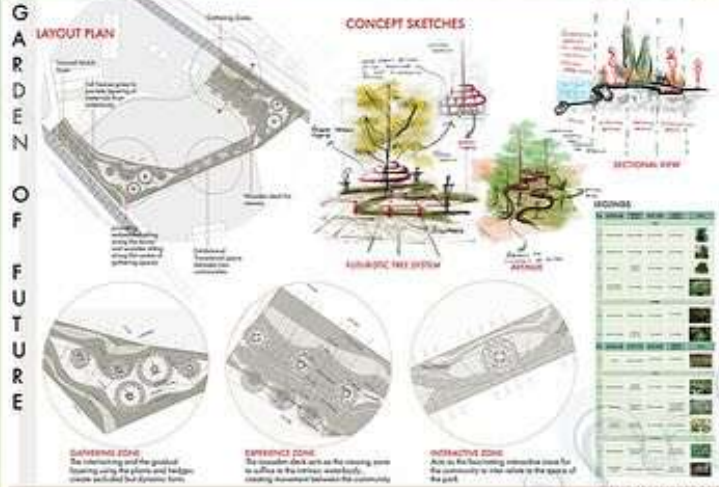
ENTRY CODE
LS 004466

CONCEPT -WEAVING NEIGHBOURHOOD THROUGH COMMUNITY TRAIL



TERRA NOVA: REDEFINING LANDSCAPES LANDSCAPE DESIGN COMPETITION

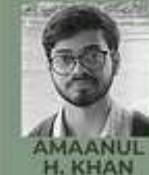
GARDEN OF FUTURE



Entry Code: 15004458



Exponential Flow is a concept that celebrates seamless movement, interconnectedness, and dynamic user experiences, forming a garden of infinite possibilities. Inspired by natural growth patterns like fractals and spirals, the design evokes the flow of energy through layered spaces that invite curiosity and reflection. It encourages visitors to navigate through nature, innovation, and discovery, fostering mindfulness and engagement. Each path and form is part of a greater whole, symbolizing unity, growth, and the endless rhythm of the landscape.



The design concept focuses on 'Weaving the neighborhood together through a community trail' that activates the space around the pond. This trail connects key points within the area, offering interactive experiences through pavilions, benches, and children's mazes to encourage exploration and social interaction. Serving as both a pathway and a gathering space, it promotes community engagement. The integration of the Terra Nova garden as a scenic backdrop to the church ties the site's history to its envisioned future.

TERRA NOVA: REDEFINING LANDSCAPES LANDSCAPE DESIGN COMPETITION EXHIBIT TO LUSSEMBURG